

Research Note

REDESCRIPTION OF *SEIRA OCEANICA* YOSII, 1960 (COLLEMBOLA: ENTOMOBRYIDAE)¹

During a recent visit to the National Museum of Natural History, Paris, Jacques Boudinot gave me a tube with springtails that he collected in New Caledonia. The sample contained 27 specimens of *Seira oceanica*, a species described by Yosii² from New Caledonian material. Although Yosii's description is excellent, it does not mention several characteristics that are now considered important in the taxonomy of the genus.³ In the following notes, characters adequately described by Yosii are not repeated.

Material Examined. New Caledonia, Rivière Bleu, March 1986, J. Boudinot, col.

Length to 2.0 mm. Distribution of violet pigment as in figure 1; posterior spot of Abd. 4 extends some distance anteriorly along dorsum of segment. Ant. 4 with large retractile bilobed papilla (fig. 11). Head macrochaetotaxy as in figure 3; M setae absent (replaced by microchaetae), 1+1 setae behind medial group of 7 setae. In-

terocular chaetotaxy as in figure 4, seta external to large seta may be absent. Prelabral setae smooth or ciliated; labral setae smooth. Labral intrusion broad, U-shaped. Inner labral papillae with short conelike tips, outer papillae rectangular (fig. 5). Labial setae a1-a5 smooth; setae M1, M2 and L2 ciliated, setae E and L1 smooth or ciliated. Setae of maxillary palp and lobe as in figure 12. Outer labial papilla as in figure 6; differentiated seta surpasses apex of papilla. Along cephalic groove 2+2 anterior setae (postlabial quadrangle) and 1+1 setae near posterior margin of head. Body macrochaetotaxy as in figure 2. Detailed chaetotaxy of Abd. 2, Abd. 3 and distribution of setae associated with bothriotricha of Abd. 4 as in figures 7 to 9. Metathoracic claws as in figure 10. Ventral manubrial chaetotaxy as in figure 13, inner setae of anterior row transformed into scales.

José A. Mari-Mutt
Department of Biology
University of Puerto Rico
Mayagüez, Puerto Rico 00708

¹ Manuscript submitted to Editorial Board 20 October 1986.

² Yosii, R., 1960. On some Collembola of New Caledonia, New Britain and Solomon Islands. *Bull. Osaka Mus. Nat. Hist.* 12: 1-38.

³ Mari-Mutt, J. A., 1987. Puerto Rican species of *Seira* (Collembola: Entomobryidae). *Carib. J. Sci.*, 22(3-4): 145-158.

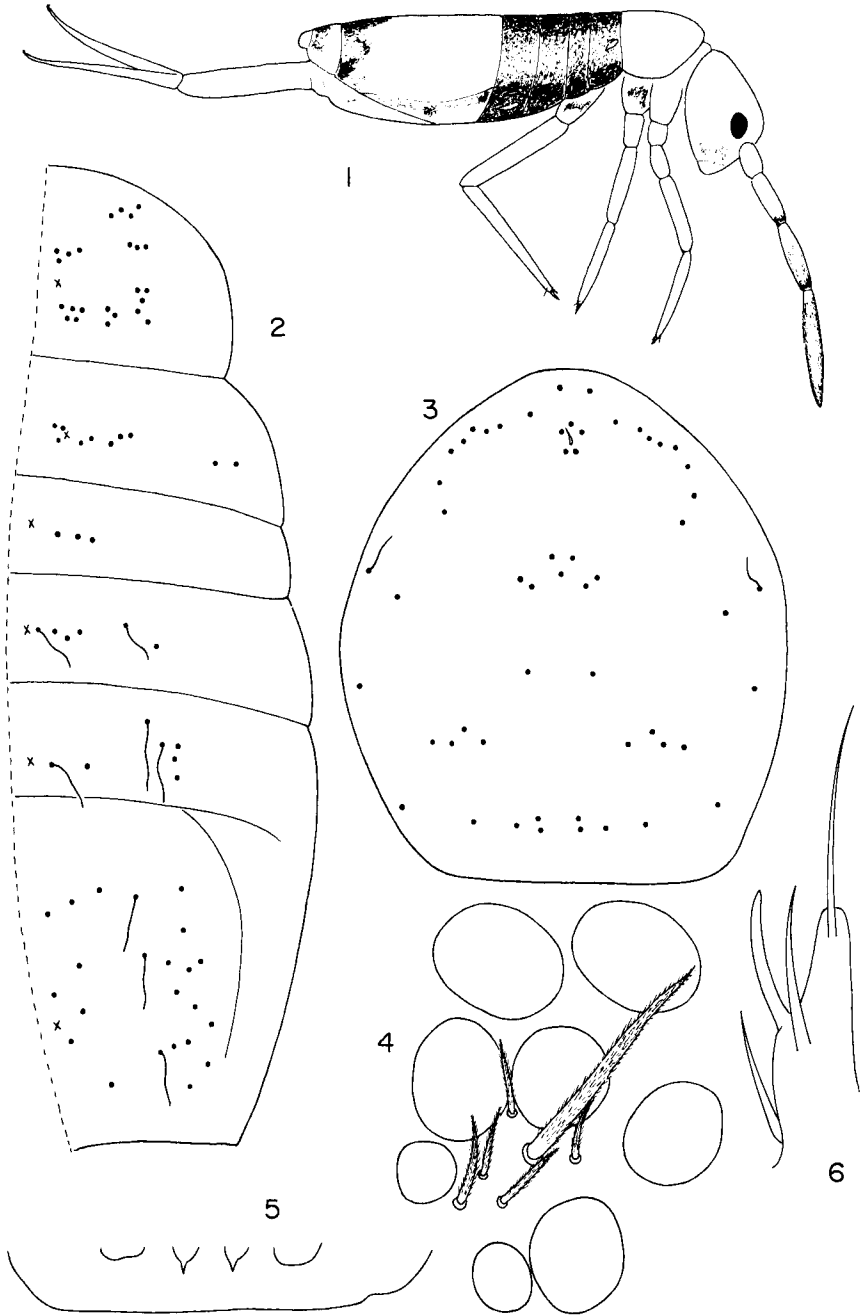


PLATE 1.—*Seira oceanica*. 1. Habitus and coloration. 2. Distribution of body macrochaetae (dots), bothriotricha (wavy lines) and pseudopores (x). 3. Head macrochaetotaxy. 4. Eyes and interocular setae. 5. Labral papillae. 6. Outer labial papilla.

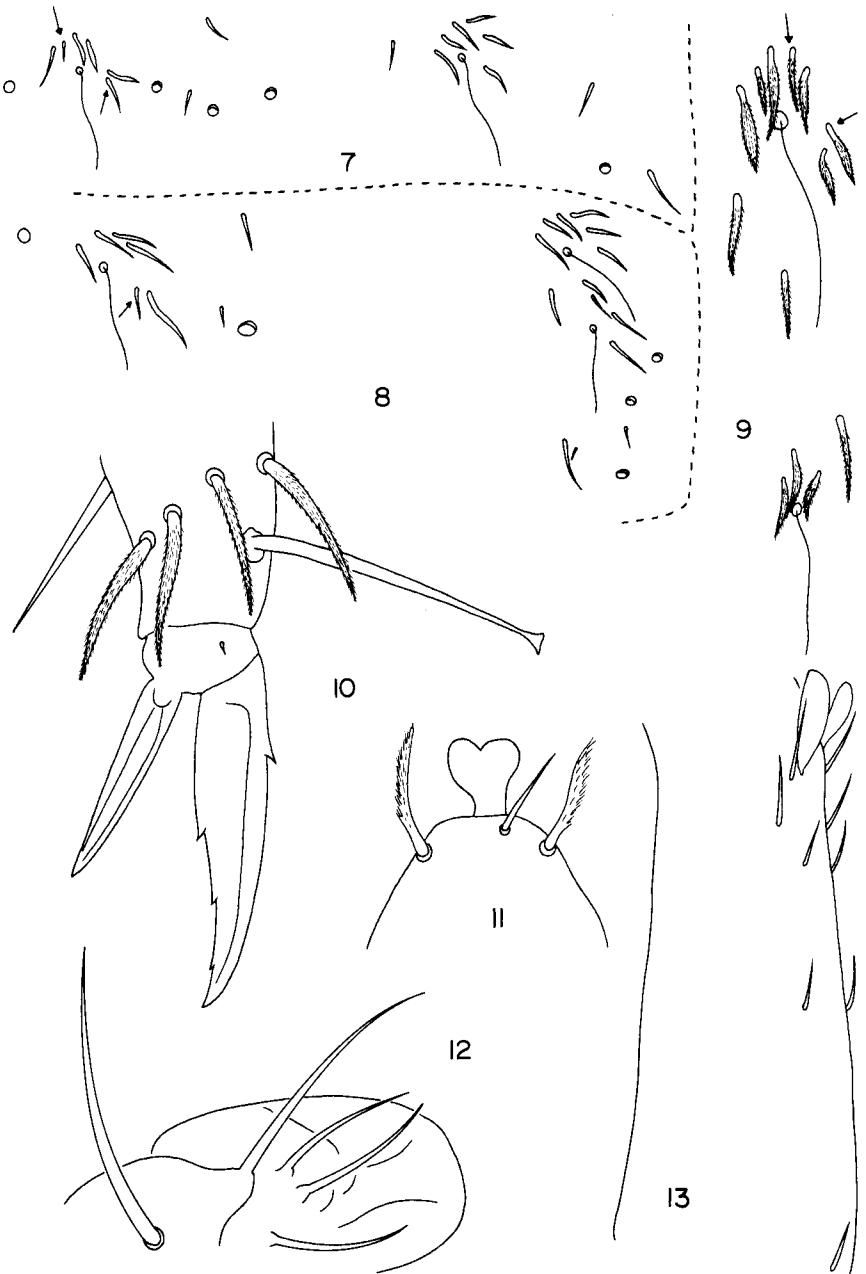


PLATE 2.—*Seira oceanica*. 7-9. Chaetotaxy of Abd. 2, Abd. 3, and setae associated with bothriotricha of Abd. 4, respectively; setae signalled by arrows are usually absent. 10. Metathoracic claws. 11. Apex of Ant. 4. 12. Maxillary palp and lobe. 13. Dorsolateral view of manubrium with positions of setae and scales that substitute the inner pair of distal setae.