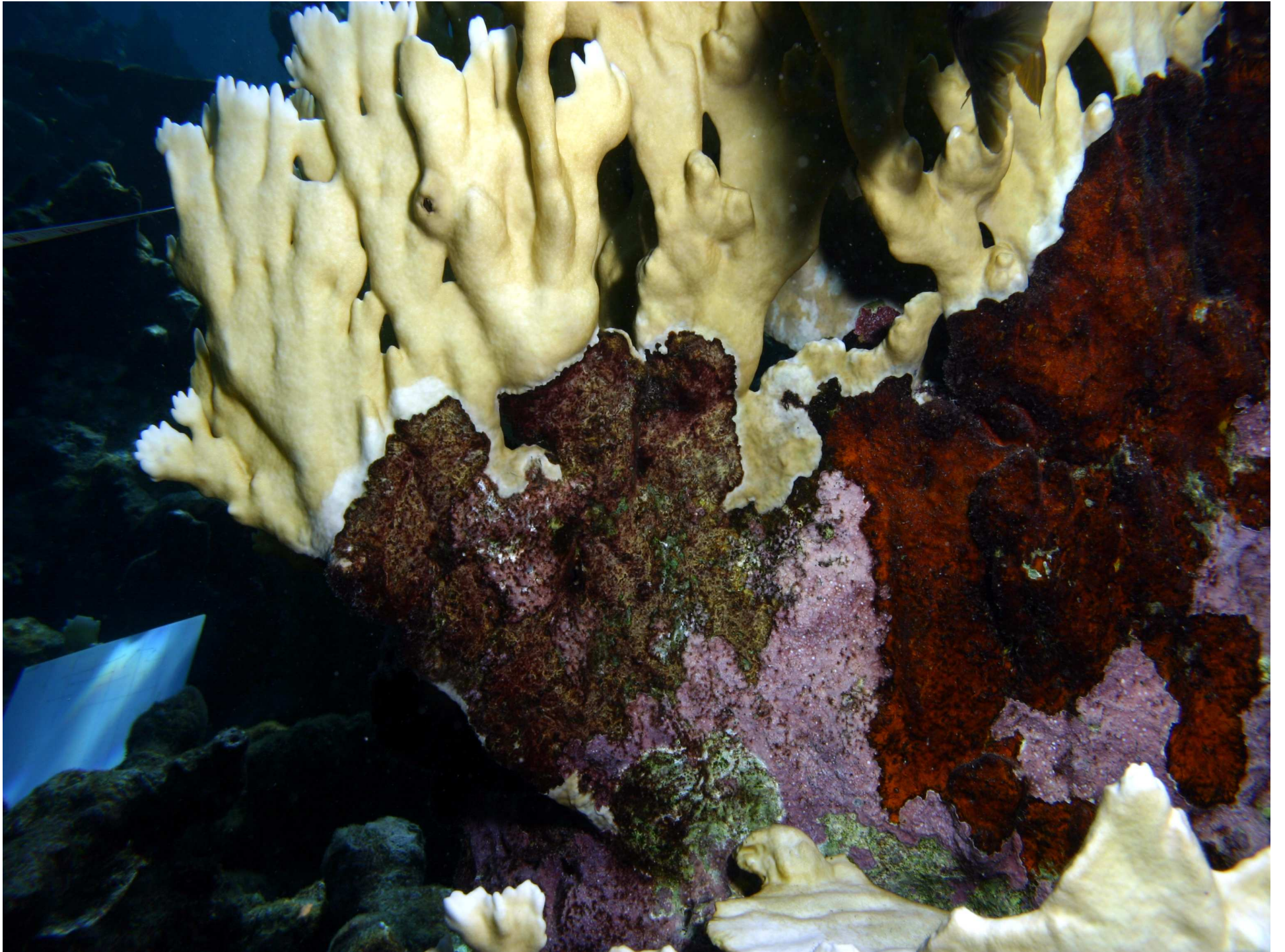
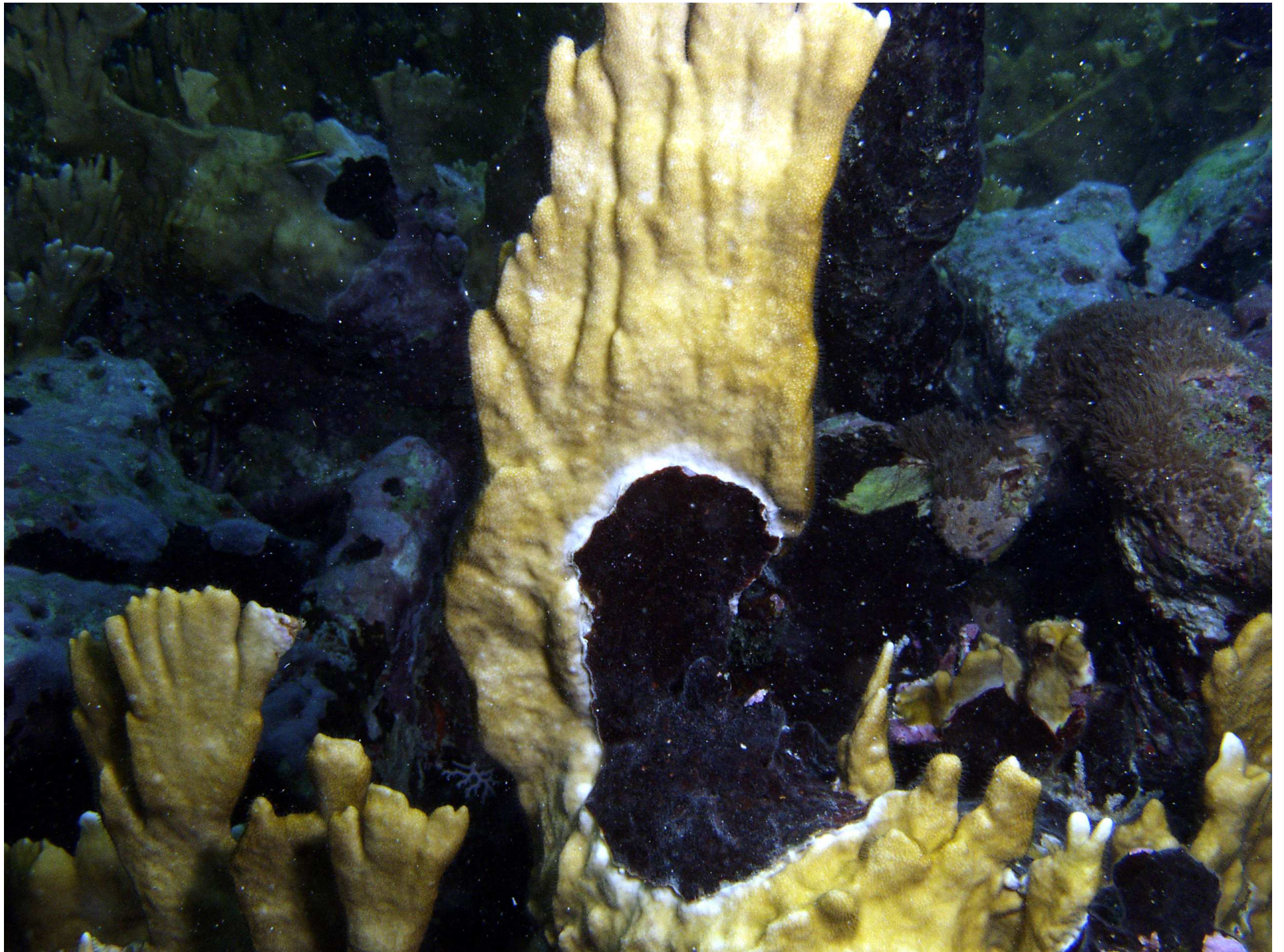


Interactions between
Metapeyssonnella
And *Millepora*

David L. Ballantine
and
Koralys Raimundi Rivera

Dept. Marine Sciences
University of Puerto Rico
Mayagüez, Puerto Rico







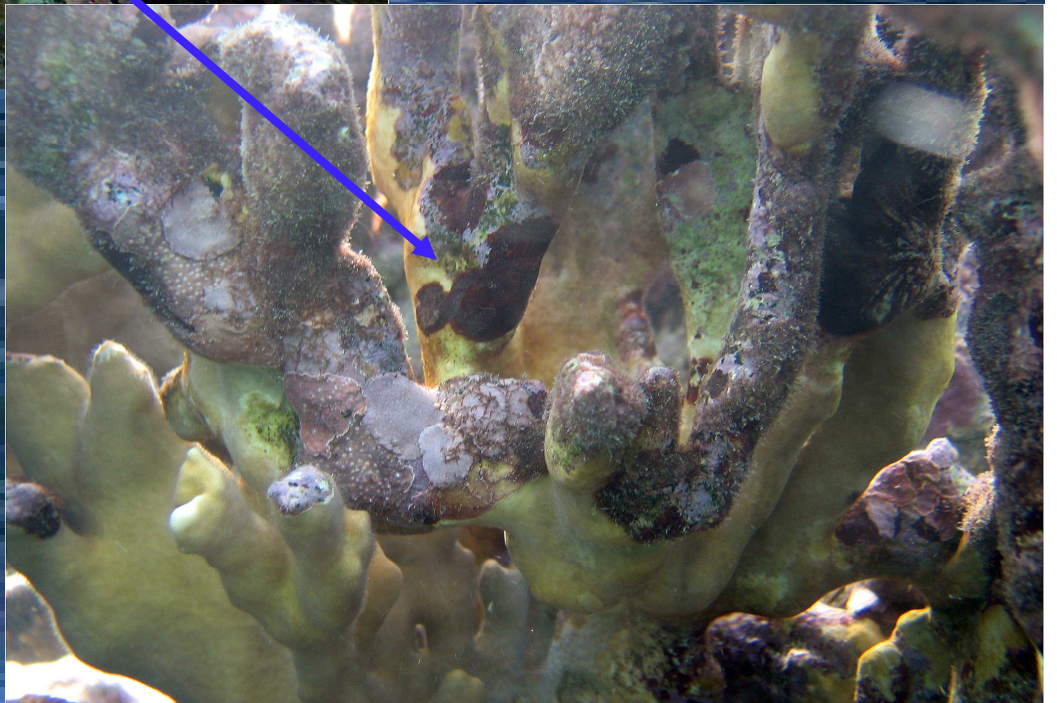




May 2, 2006



June 13, 2006





Metapeyssonnelia effects on *Millepora*
at San Cristobal and Mario Reefs

Determine incidence of occurrence on live coral

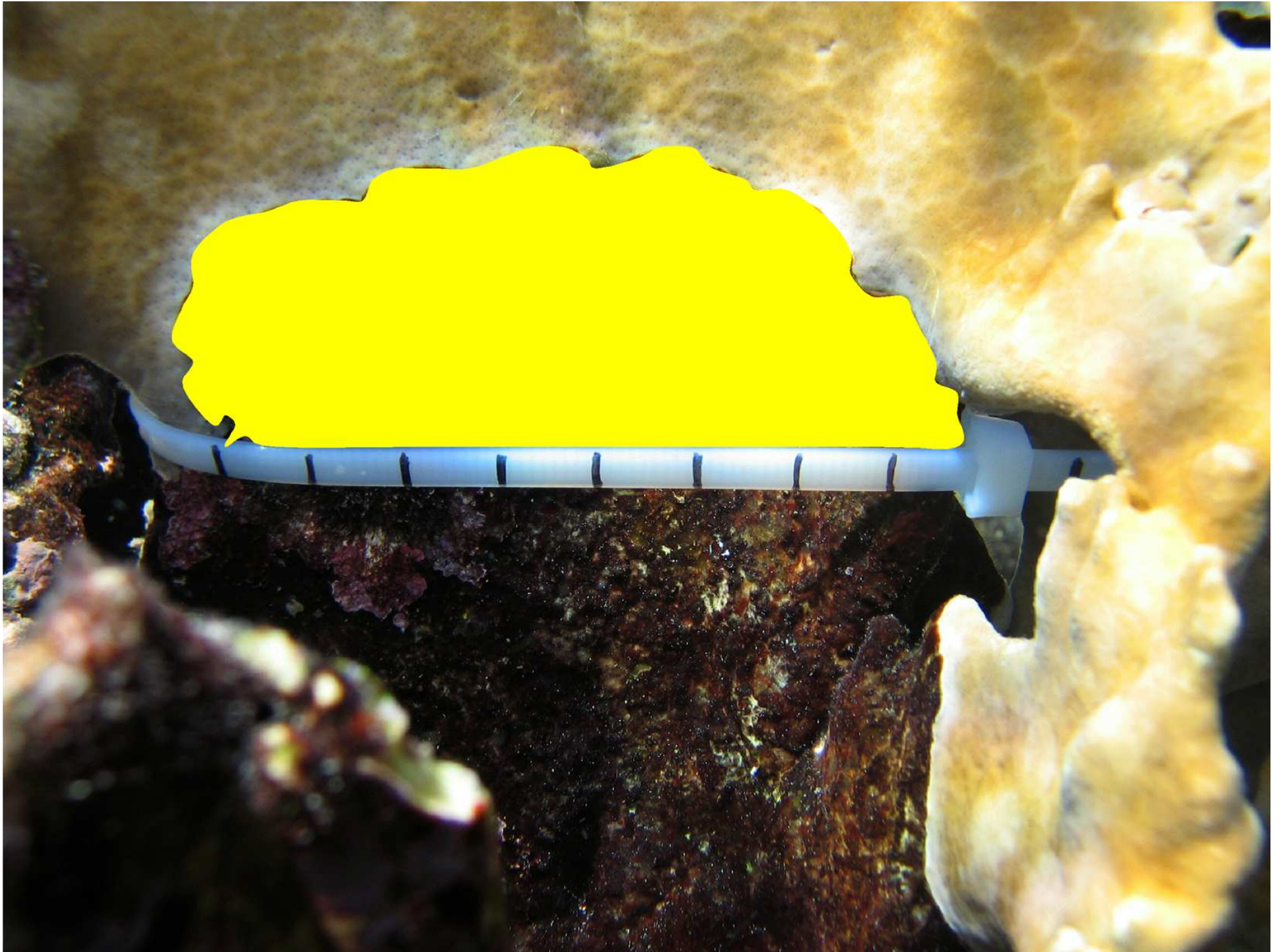
Determine % of colony tissue killed

Determine rate of spreading on coral tissue

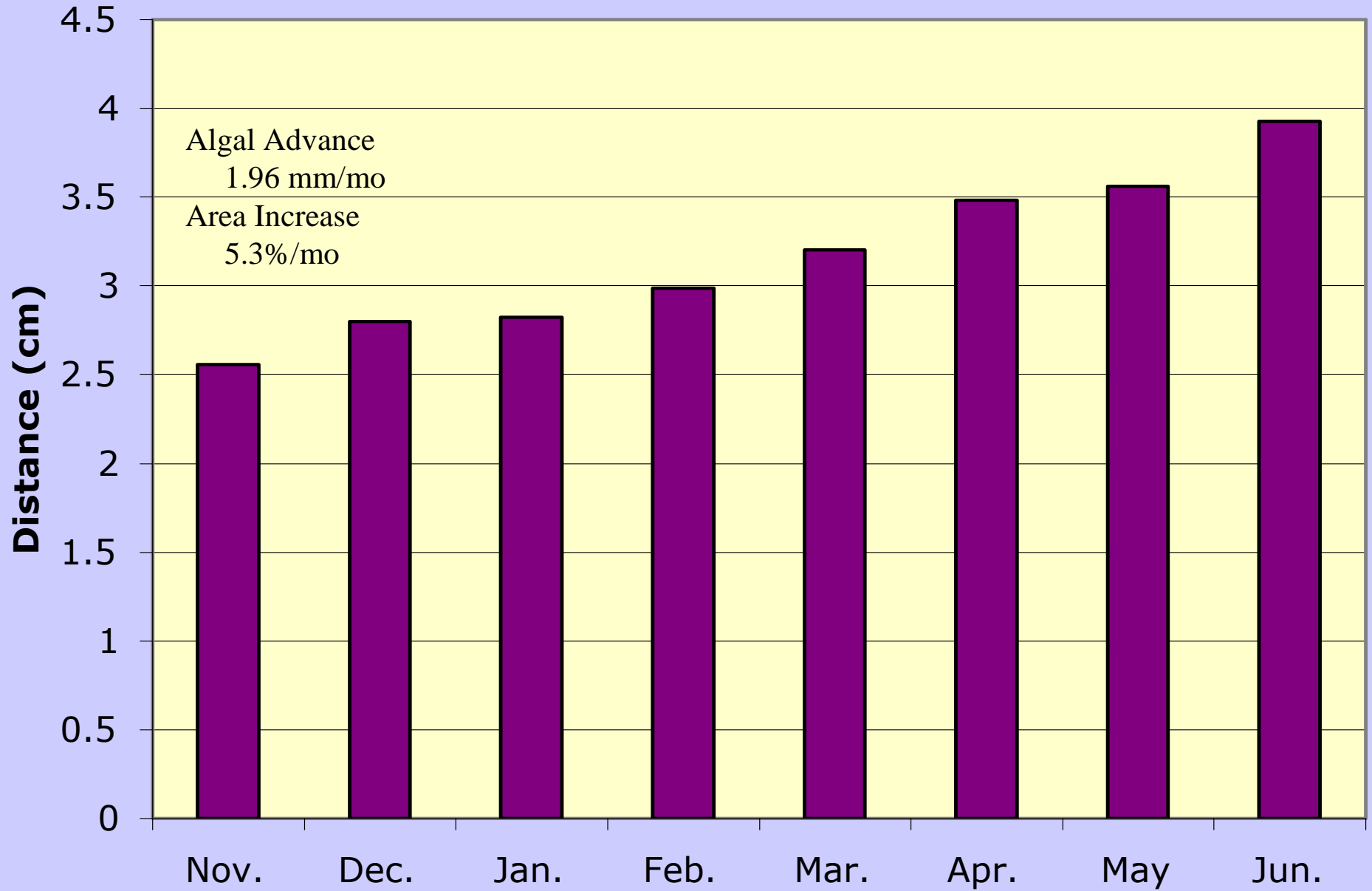
Determine toxicity effects of crude algal extracts on living coral tissue



SigmaScan 5.0



Metapeyssonnaelia Growth



Metapeyssonnaelia Growth

