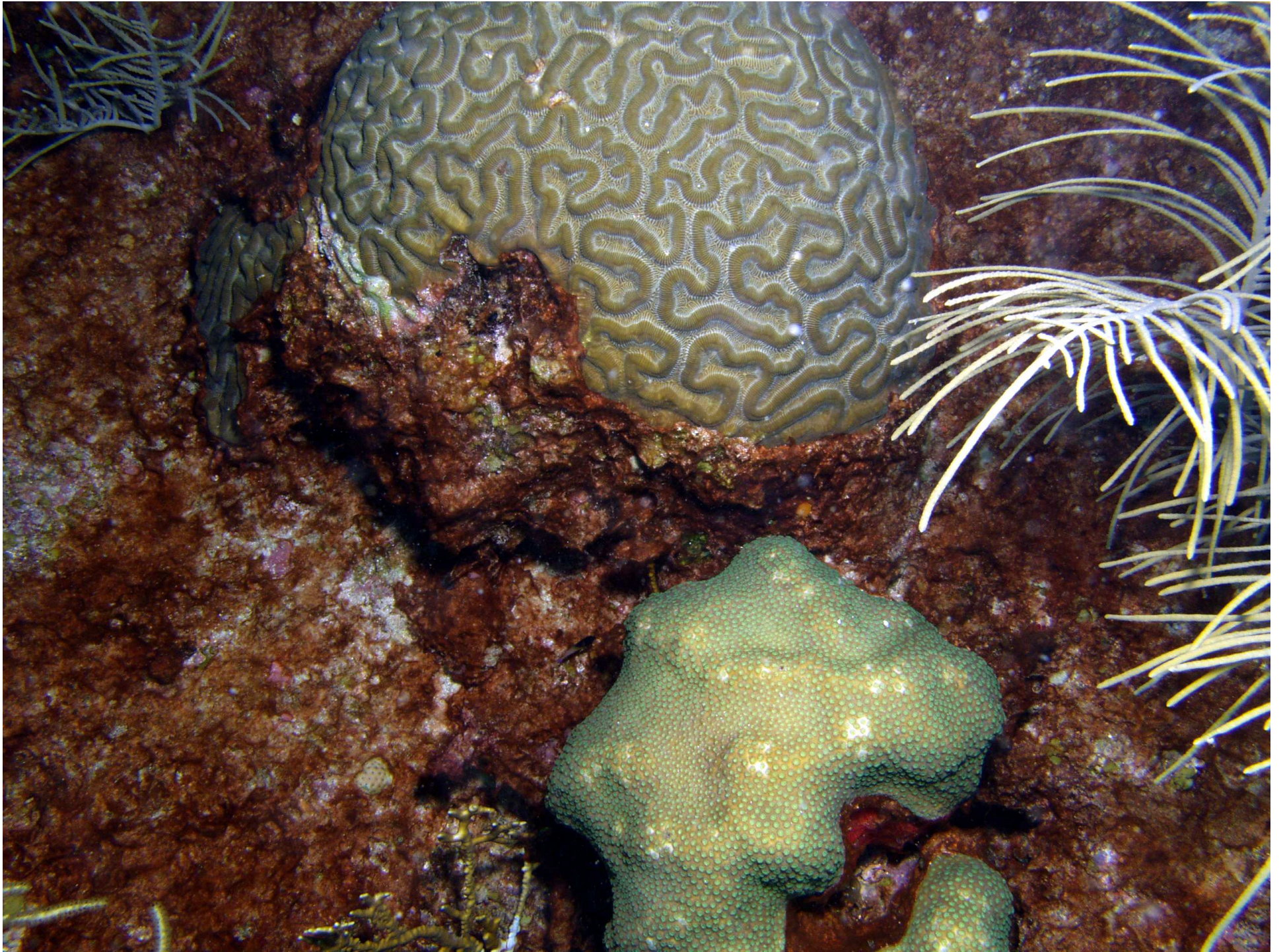


Algal Epizooism

David L. Ballantine
Dept. Marine Sciences
University of Puerto Rico
Mayagüez, Puerto Rico





Epizoic Cyanobacteria on Corals

Identify cyanobacterial species present on La Parguera Reefs

Monitor growth dynamics temporally (% cover) utilizing non-destructive sampling

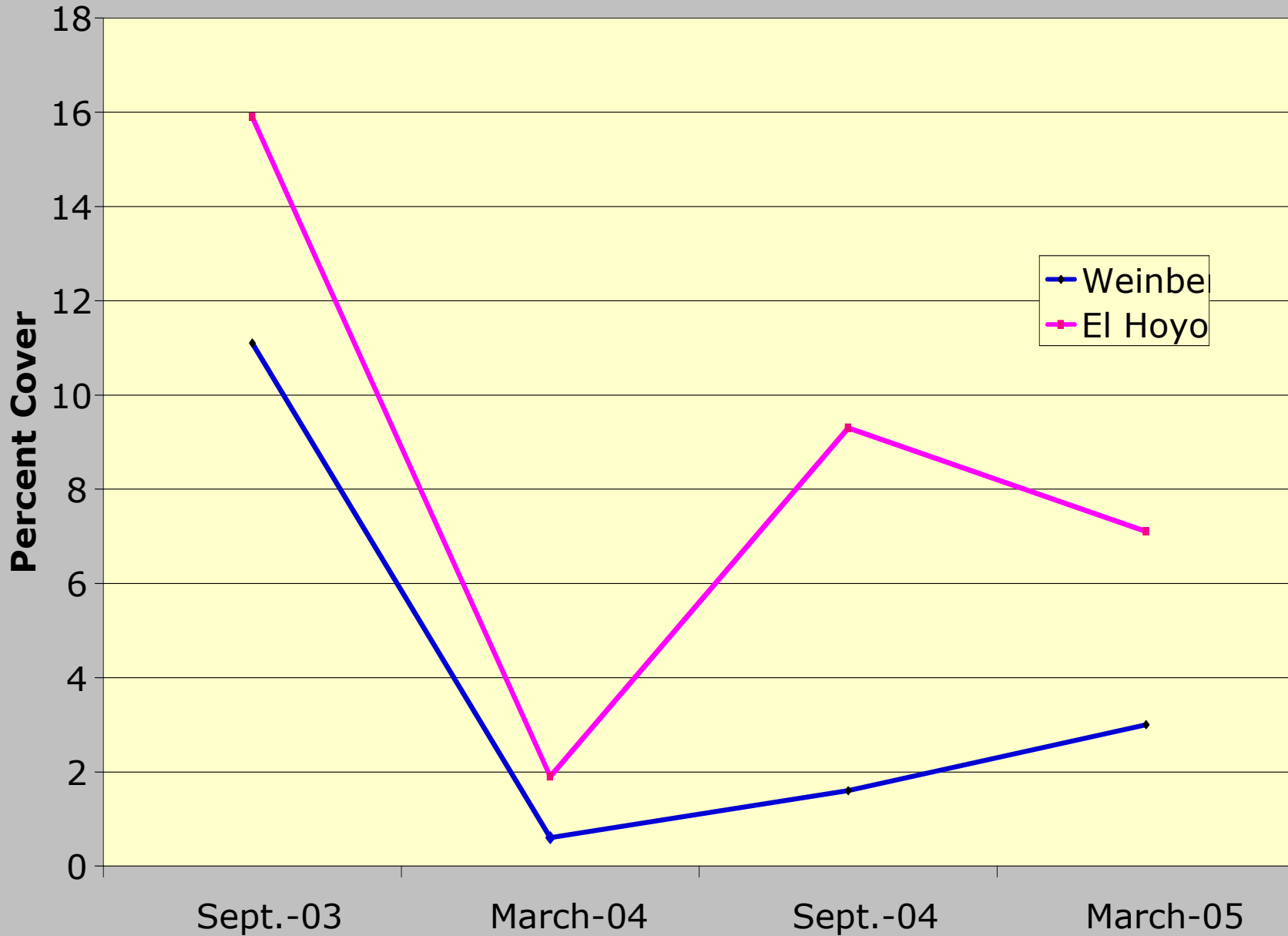
Determine biomass of cyanobacteria on reefs temporally

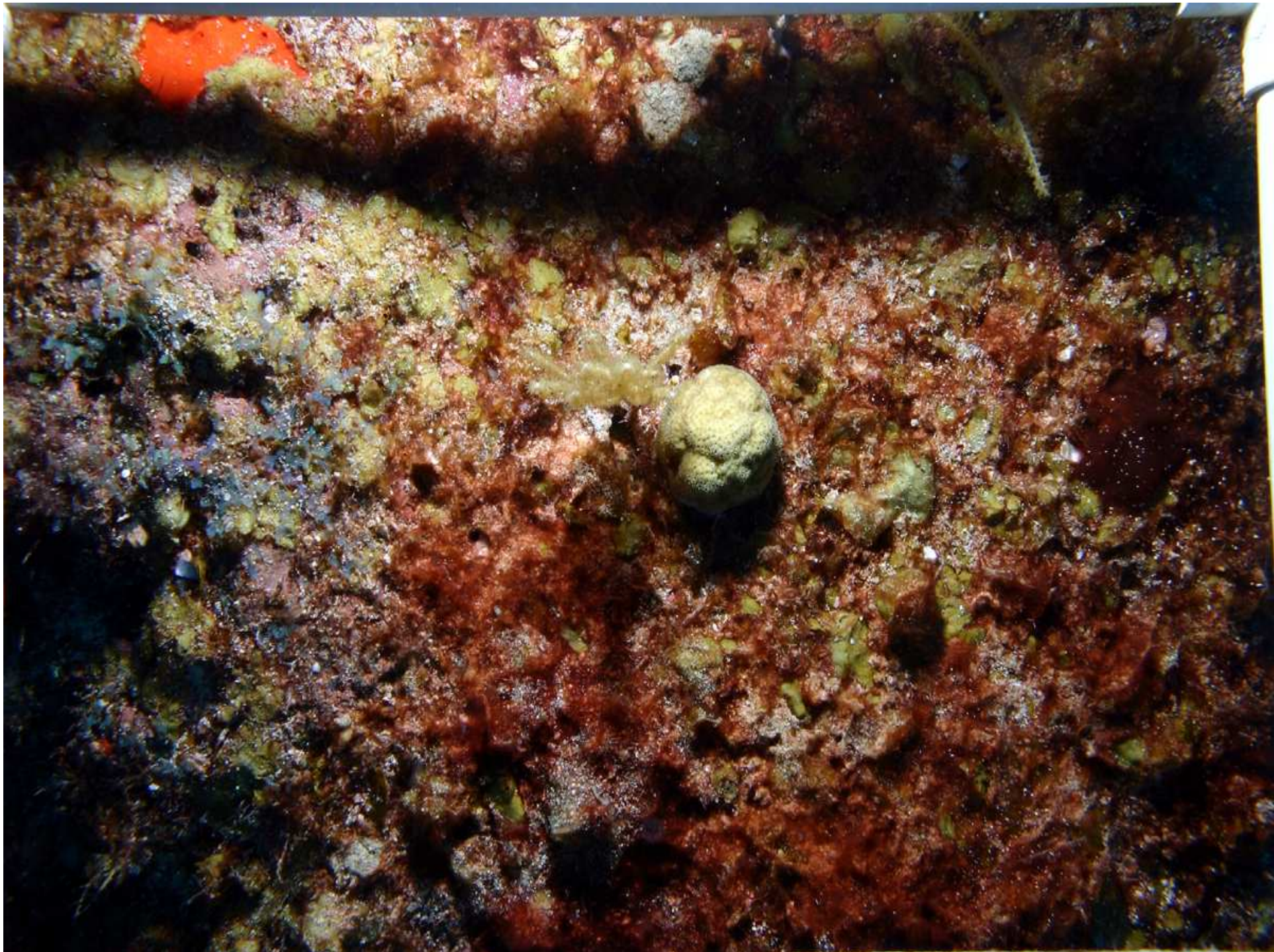
Examine overgrowth of other benthic organisms and their fate following overgrowth

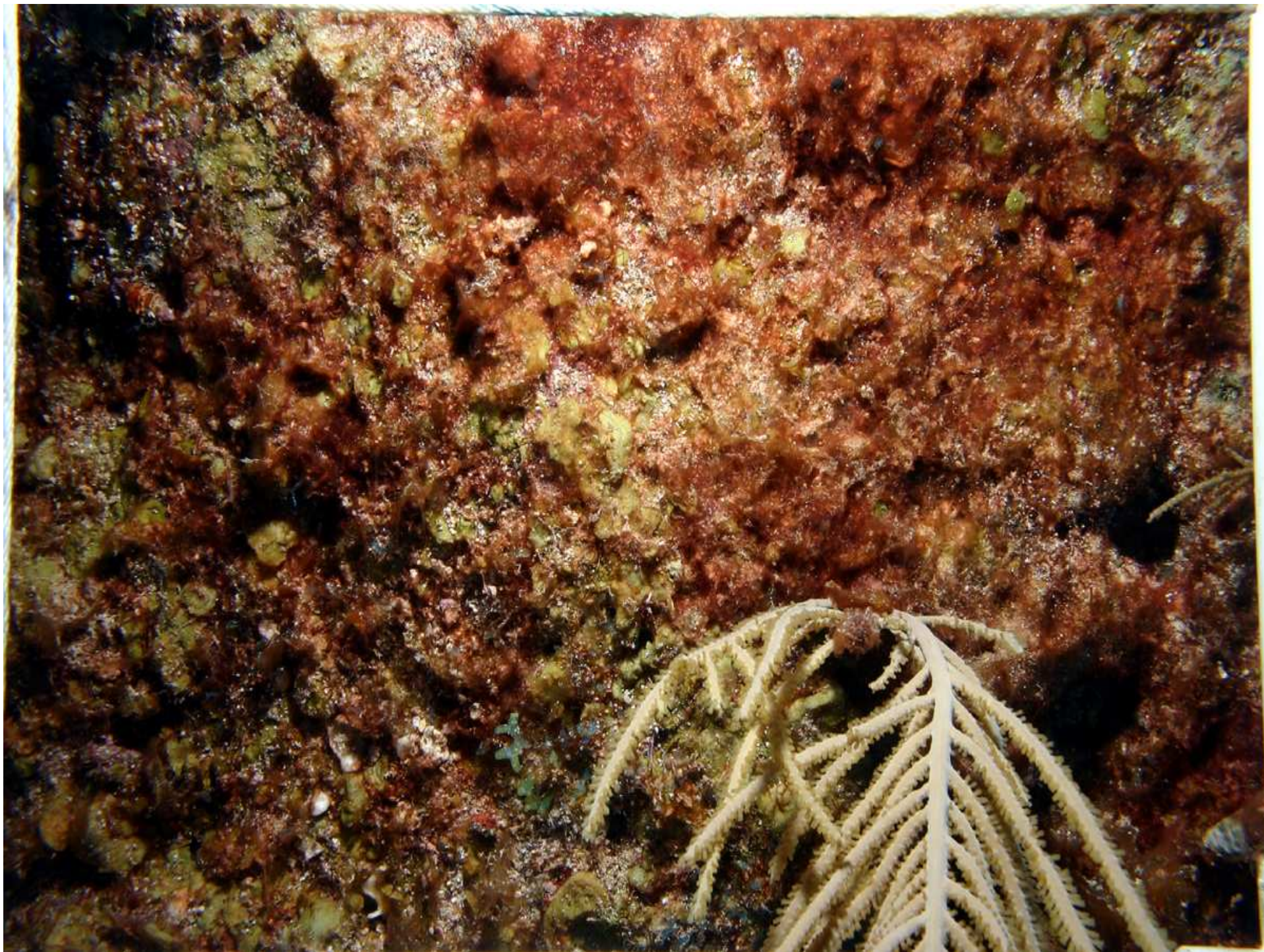
Determine primary colonization on settling plates

Determine culture response to different nutrient regimes in laboratory

Schizothrix Percent









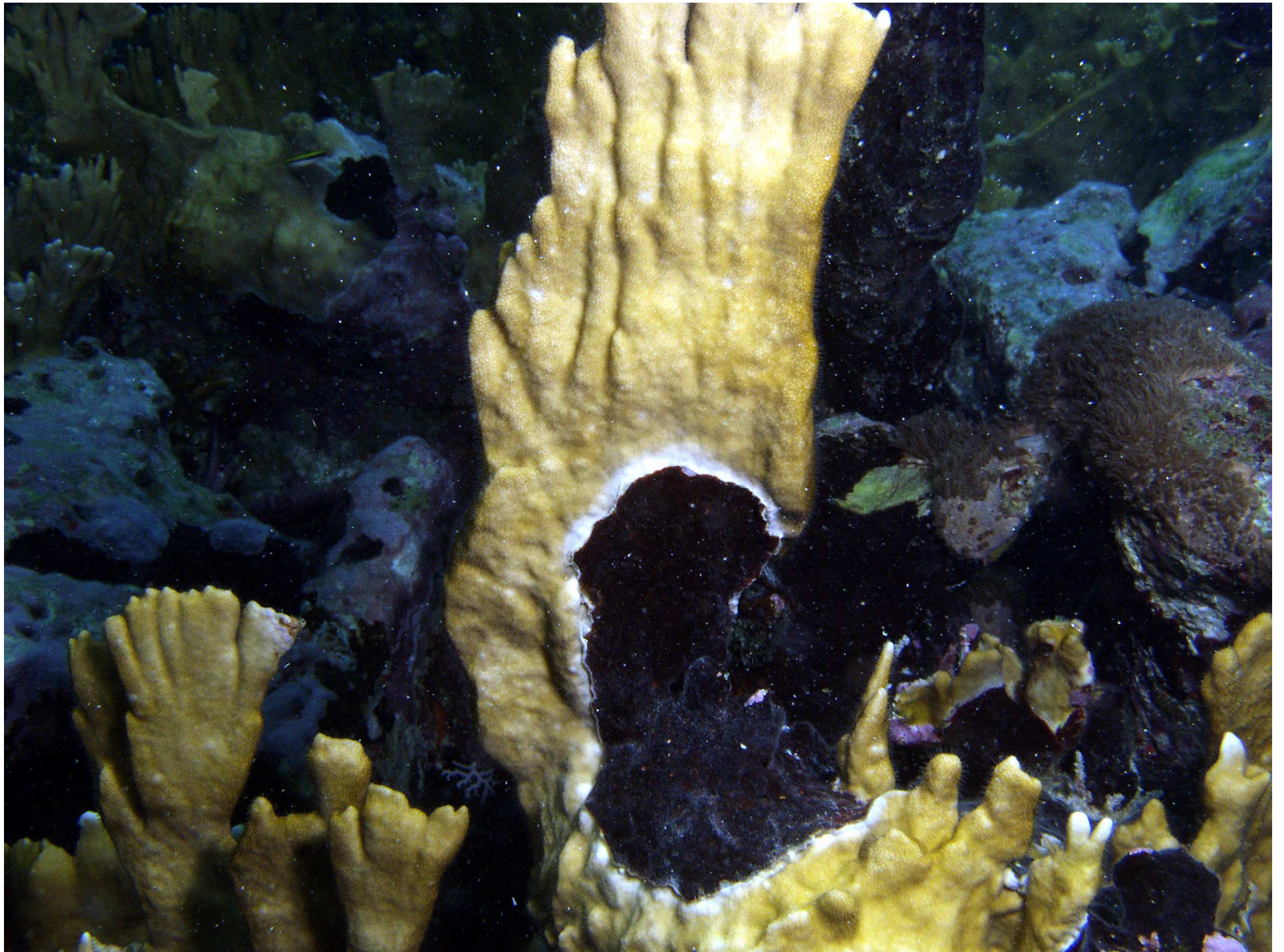
Metapeyssonnelia effects on *Millepora*
at San Cristobal and Mario Reefs

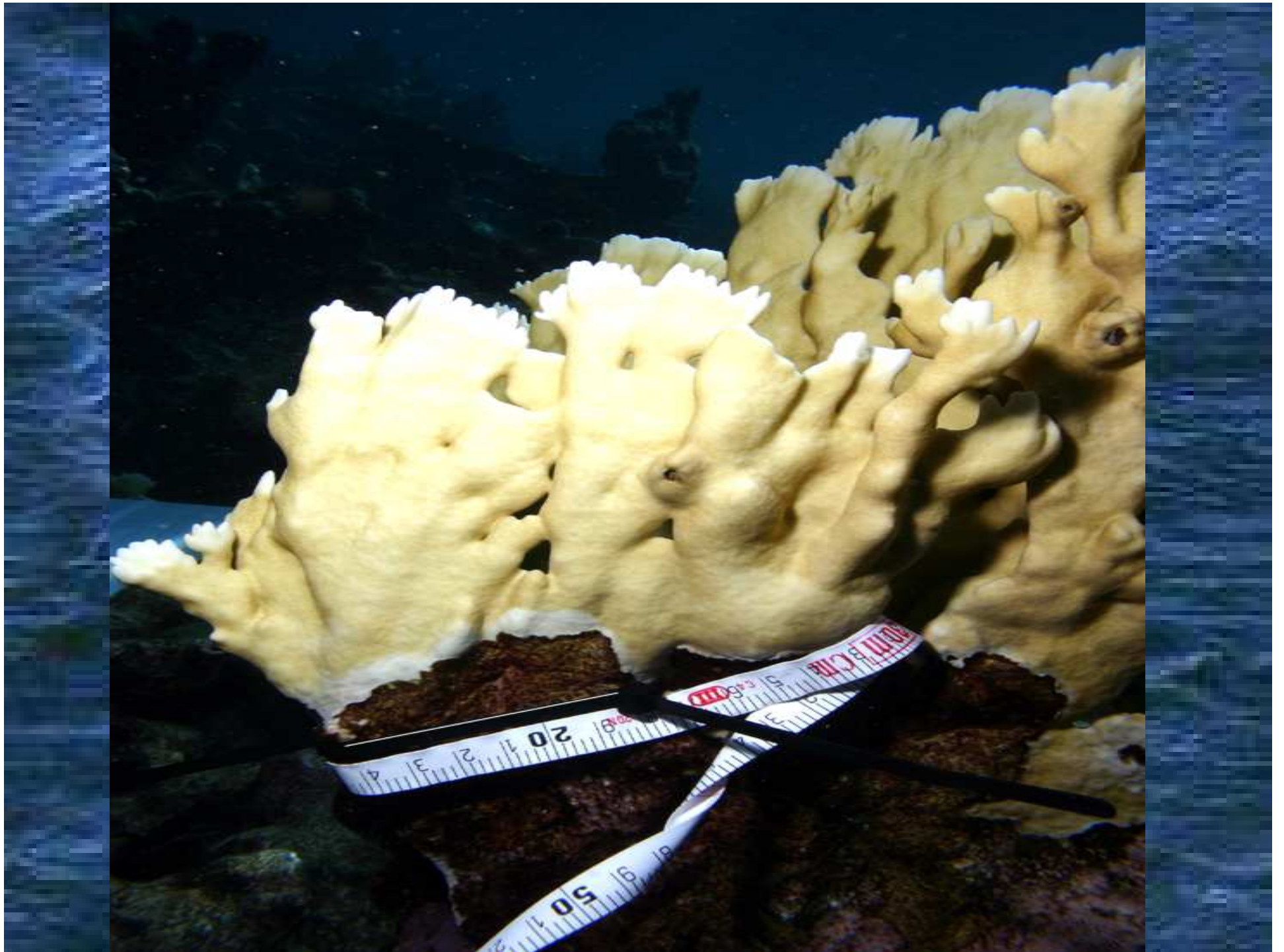
Determine incidence of occurrence on live coral

Determine % of colony tissue killed

Determine rate of spreading on coral tissue

Determine toxicity effects of crude algal extracts on living coral tissue





Reef	<i>Metapeysonnelia Corallipeda</i> % Cover(Frequency)	<i>Metapeysonnelia Sp</i> % Cover(Frequency)
Pelotas (2m)	0.7 (29.2)	7.5 (62.5)
SanCristobal (2 m)	124 (83.3)	7.8 (75)
EnriqueReef (2m)	8.4 (37.5)	3.6 (54.2)
EnriqueReef (6m)	0 (0)	0 (0)
EnriqueReef (10m)	0 (0)	0.3 (16.7)
Media Luna (4 m)	0.4 (8.3)	0 (0)
Turumote Reef (3 m)	0 (0)	0.04 (8.3)
Wanberg (20m)	0 (0)	0 (0)
El Hoy (20m)	0 (0)	0 (0)

Percent Cover of *Metapeysonnelia corallipeda* and *Metapeysonnelia sp.* at emergent reefs in La Parguera.

Metapeyssonne

