

2005

HABITAT MAPPING OF THE WEST COAST OF PUERTO RICO

Jose A. Rivera

Under contract to:

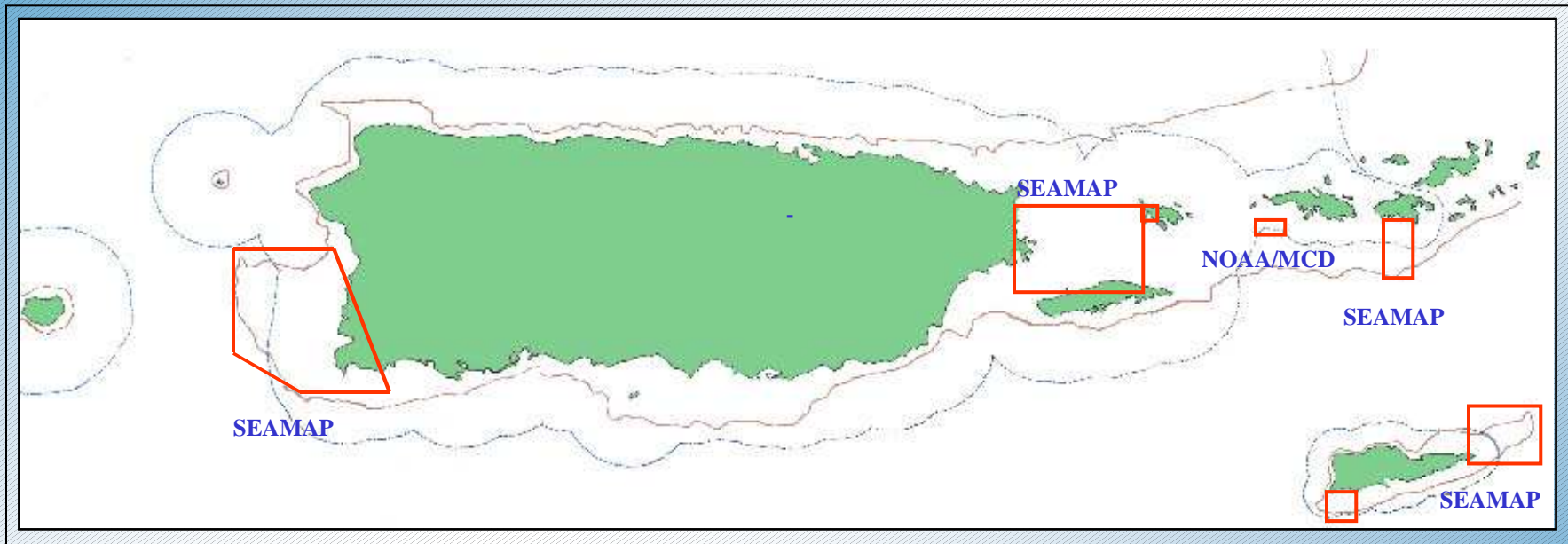
NOAA Fisheries, SEFSC

Miami Laboratory, Biodiversity and Protected Resources Division

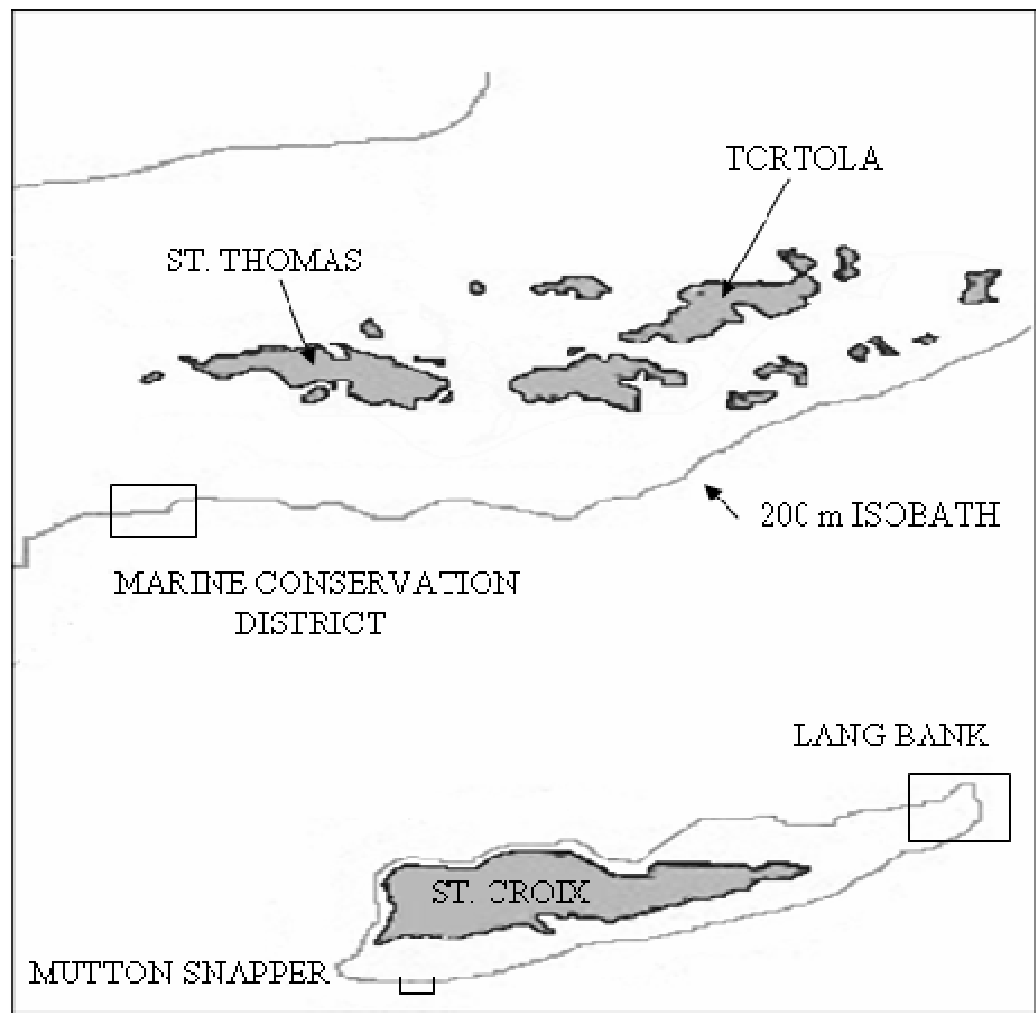
HC-01, Box 1736

Boqueron, Puerto Rico 00622-9704

SEAMAP DATA COLLECTION LOCATIONS IN PUERTO RICO AND THE US VIRGIN ISLANDS.



- 100 Fathom isobath
- - - Federal Jurisdiction begins and extends seaward



MARINE CONSERVATION DISTRICT

- 1. 18° 13.2' N 65° 06.9' W
- 2. 18° 13.2' N 64° 59.0' W
- 3. 18° 11.8' N 64° 59.0' W
- 4. 18° 10.7' N 65° 06.9' W

LANG BANK

- 1. 17° 49.3' N 64° 27.9' W
- 2. 17° 49.3' N 64° 26.8' W
- 3. 17° 48.3' N 64° 25.9' W
- 4. 17° 48.3' N 64° 26.8' W
- 5. 17° 47.3' N 64° 28.0' W
- 6. 17° 47.3' N 64° 26.8' W

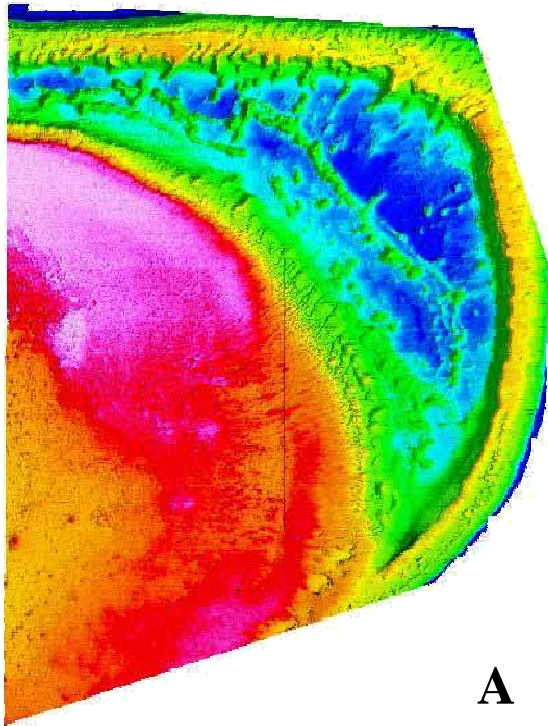
MUTTON SNAPPER

- 1. 17° 37.8' N 64° 53.0' W
- 2. 17° 39.0' N 64° 53.0' W
- 3. 17° 39.0' N 64° 50.5' W
- 4. 17° 38.1' N 64° 50.5' W
- 5. 17° 37.8' N 64° 52.5' W

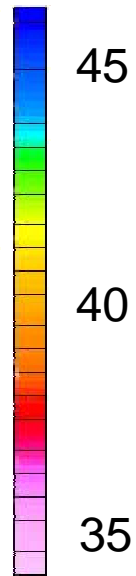
17.723599°N

64.447335°W

BATHYMETRY



A







17.650846°N

64.847471°W

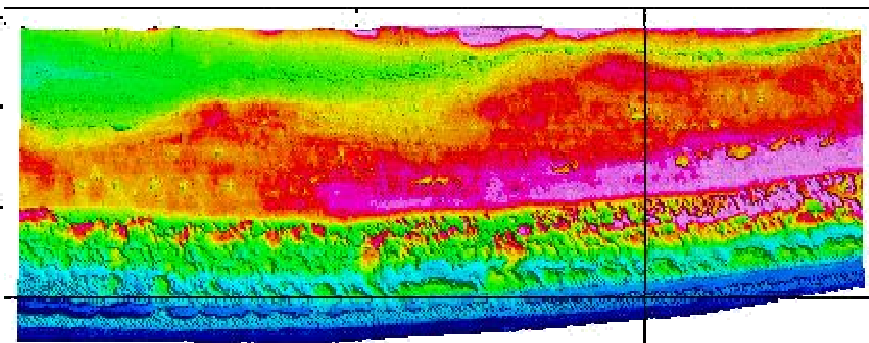
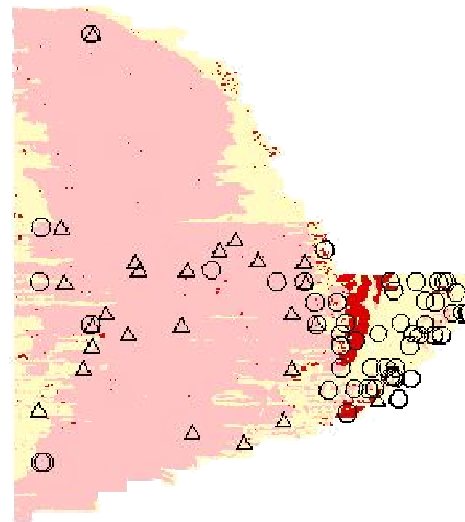
HABITAT



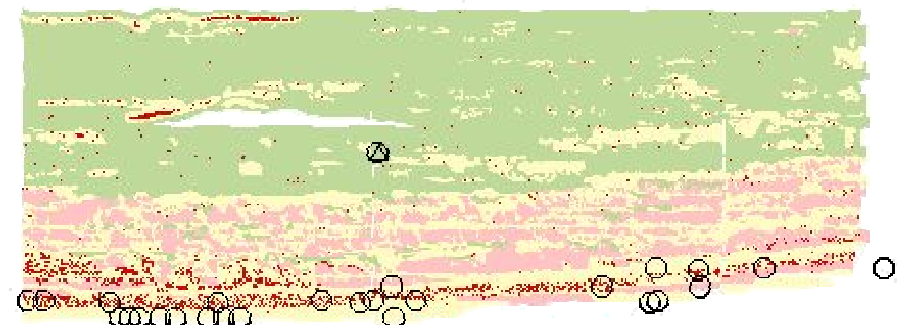
1.86 Km

-  Algae
-  Corals
-  Pavement
-  Sand

B

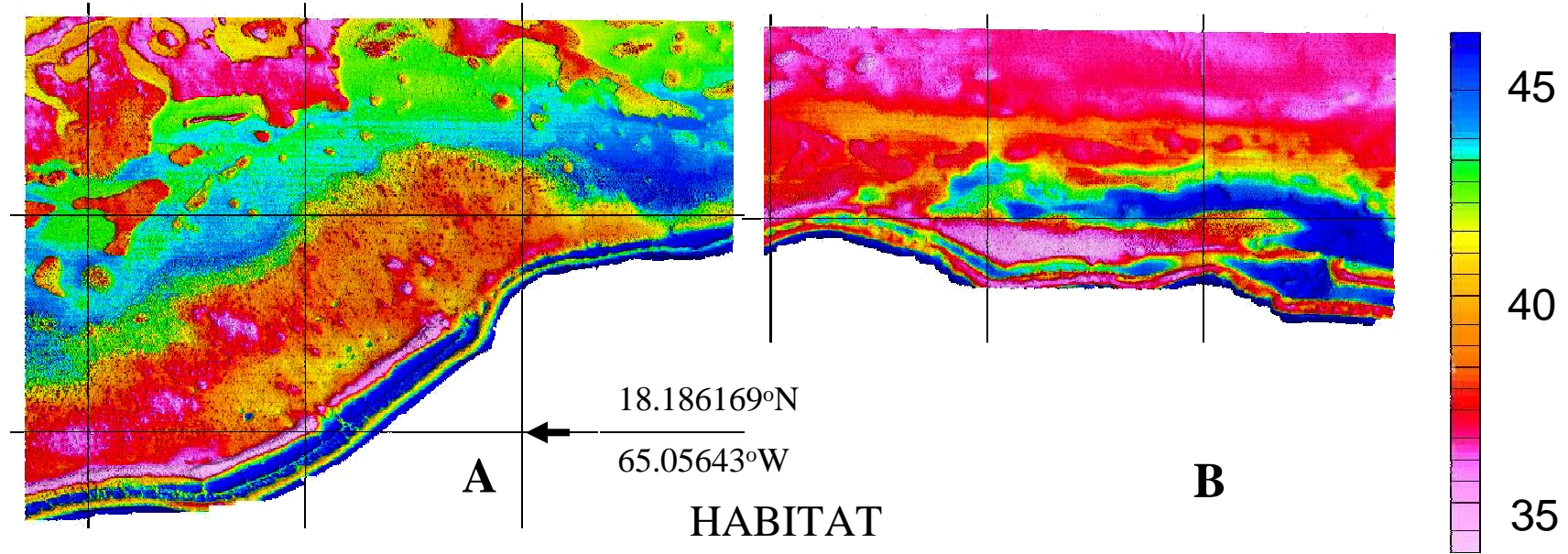


C

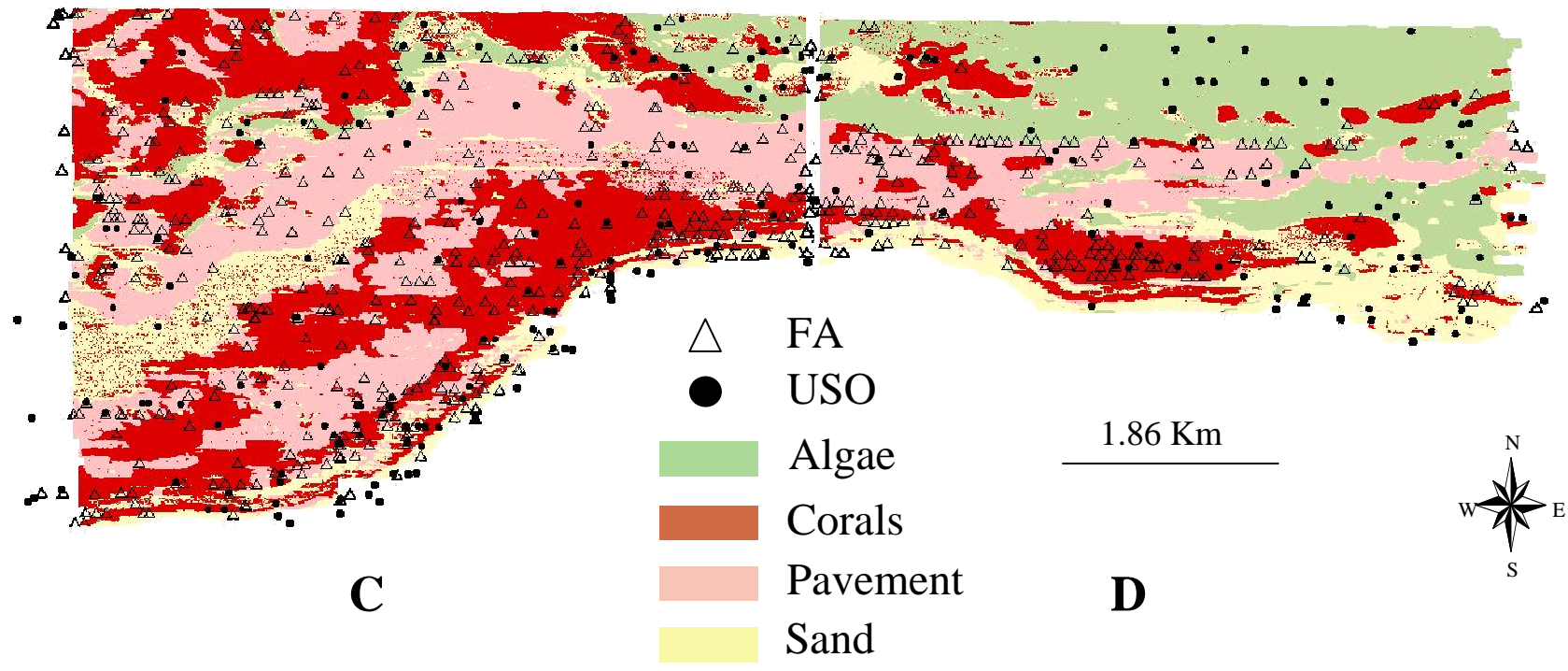


D

BATHYMETRY

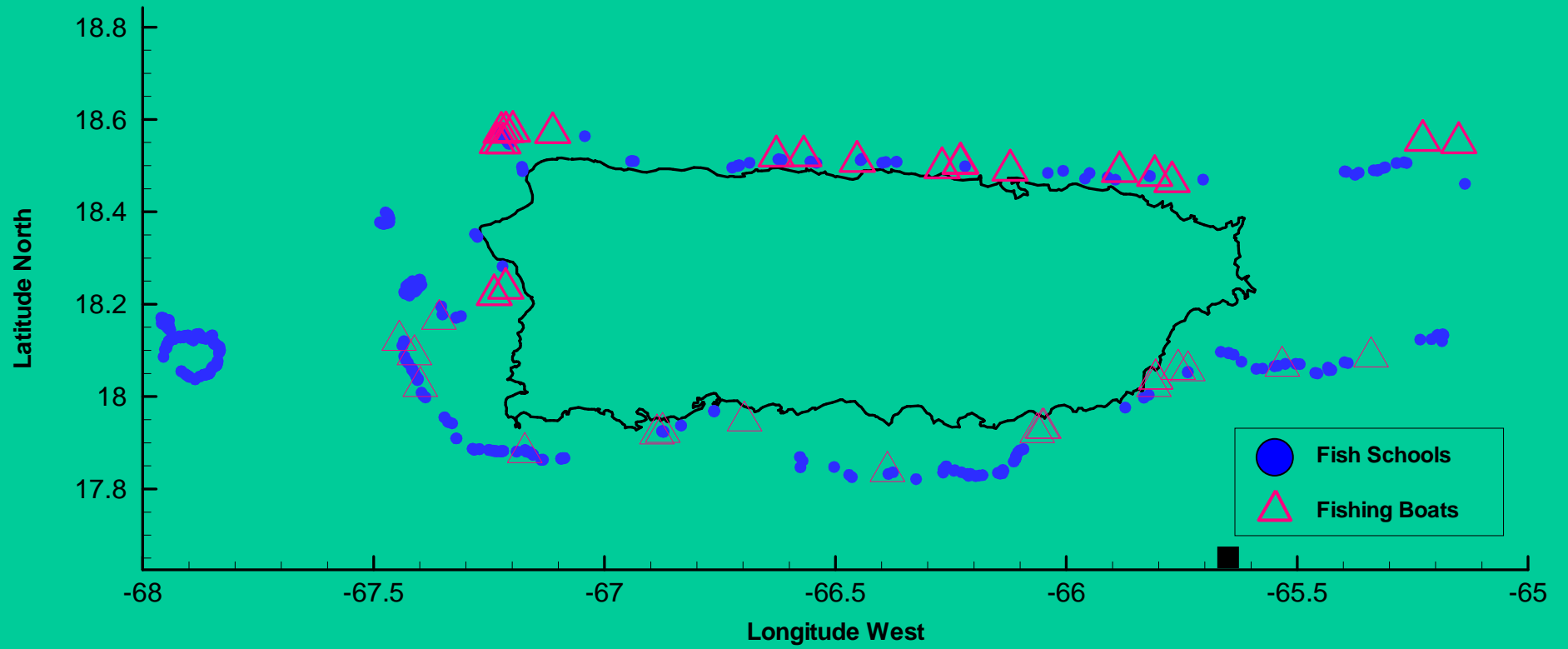


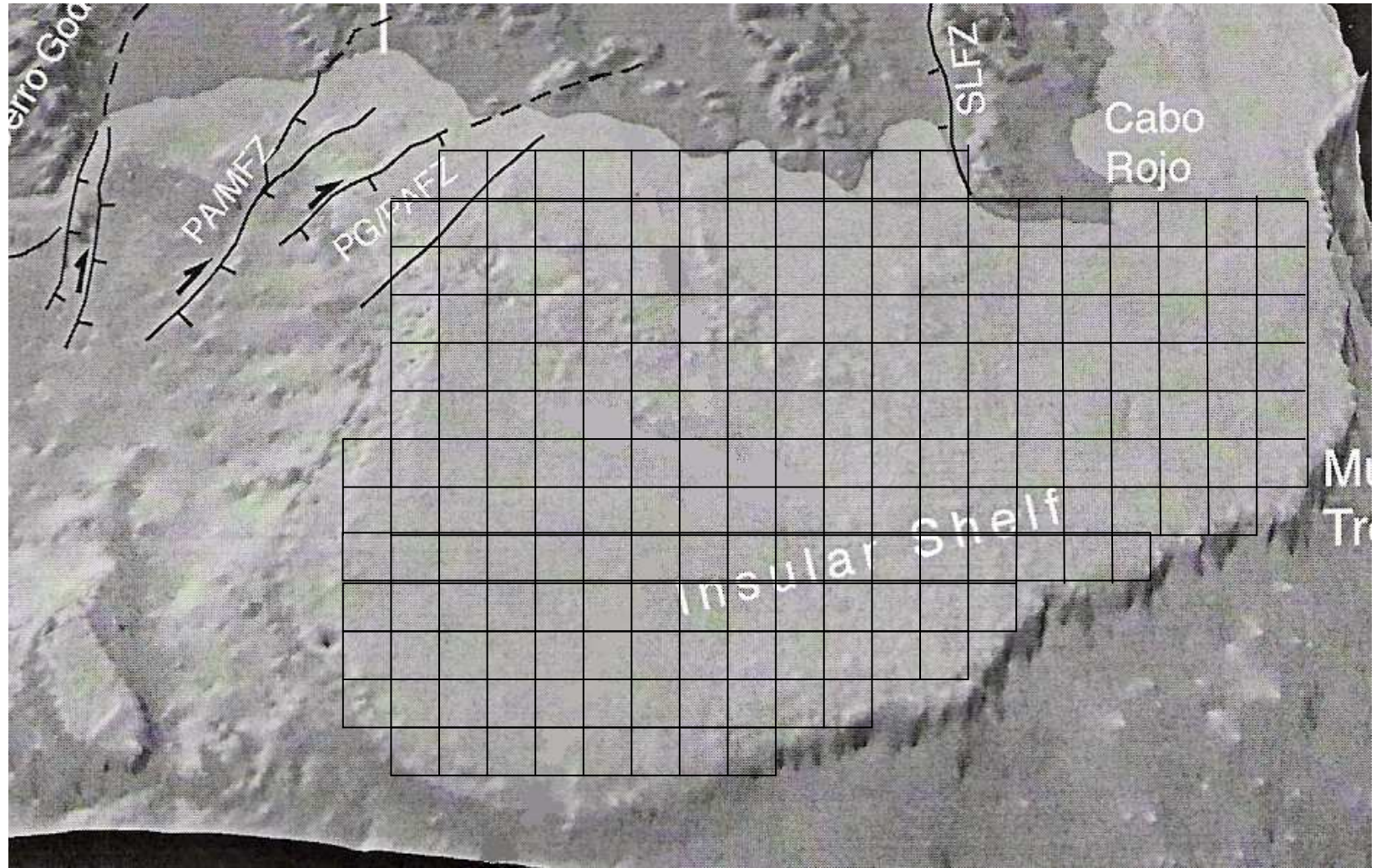
HABITAT



2004 - 2005 Main Tasks

1. Oct 2004 - Started paperwork for contract with PUPR.
 - Mar 2005 - Contract should be signed by UPRM Chancellor.
 - May 2005 – Expect to begin SSS data collection.
2. Obtain SSS data previously collected for area; assess if it can be used for habitat mapping.
3. Loan SIS-1500 SSS from DNER. (?) Or lease.(?)
4. Process SSS data to obtain habitat maps.





Cabo Rojo Shelf Area = 193, 1nm²

| <u>Swath (m)</u> | <u>nm²/day</u> | <u>Total days</u> |
|------------------|---------------------------|-------------------|
| 100 | .8 | 154 |
| 200 | 3 | 64 |
| 300 | 4.5 | 43 |
| 400 | 6 | 32 |