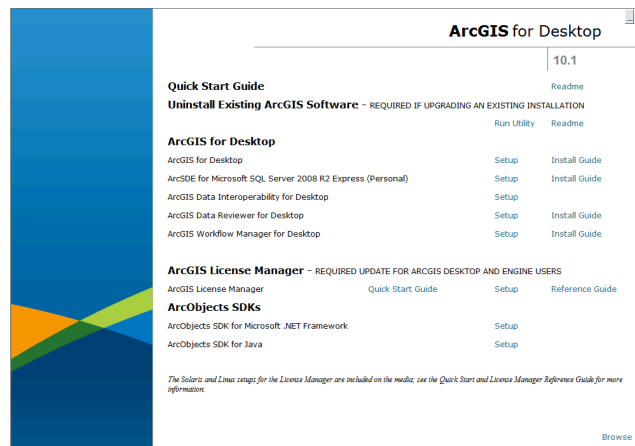
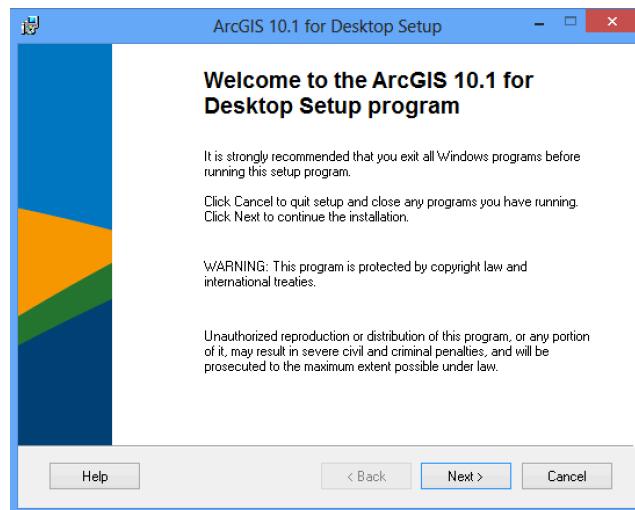


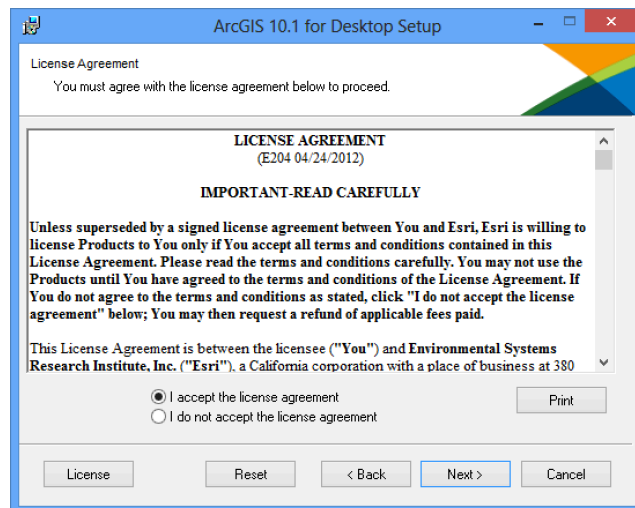
Presionar Setup en ArcGIS Desktop.



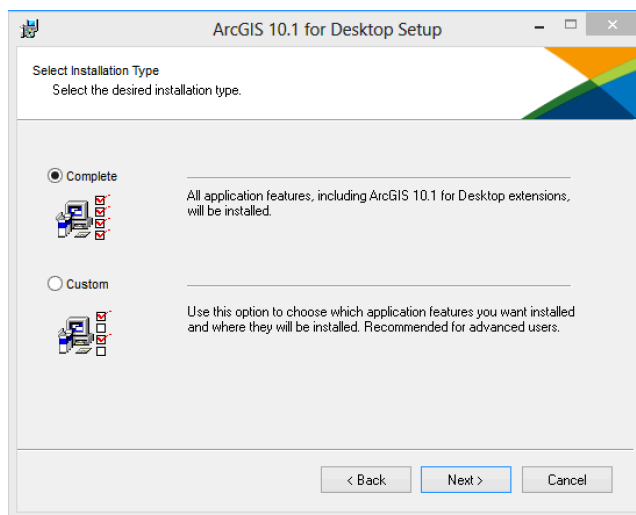
Iniciar Proceso de instalación.



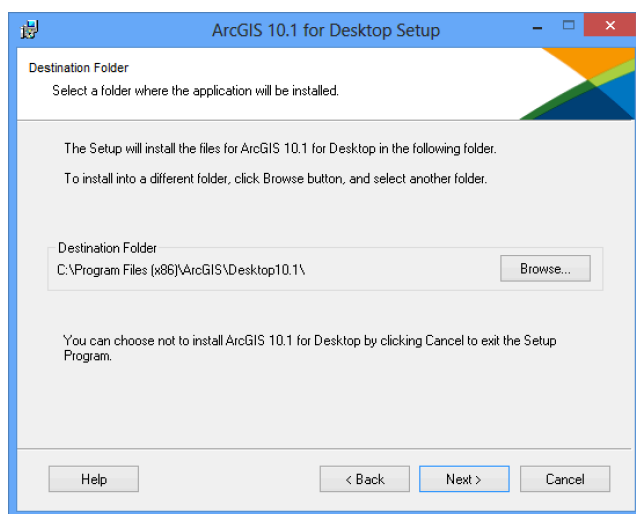
Acuerdo de licenciamiento.



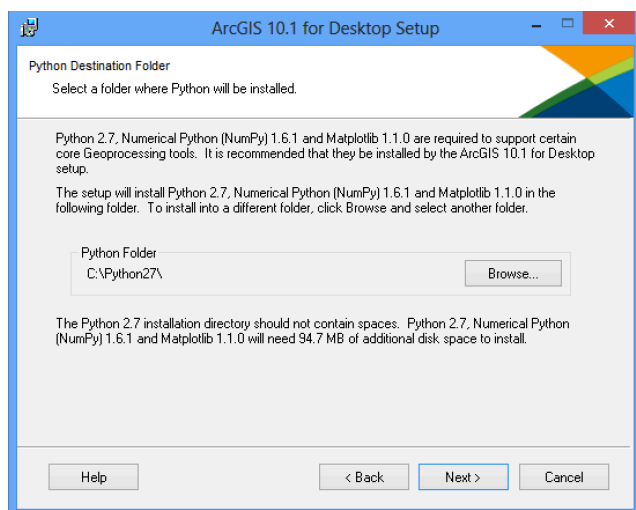
## Tipo de instalación.



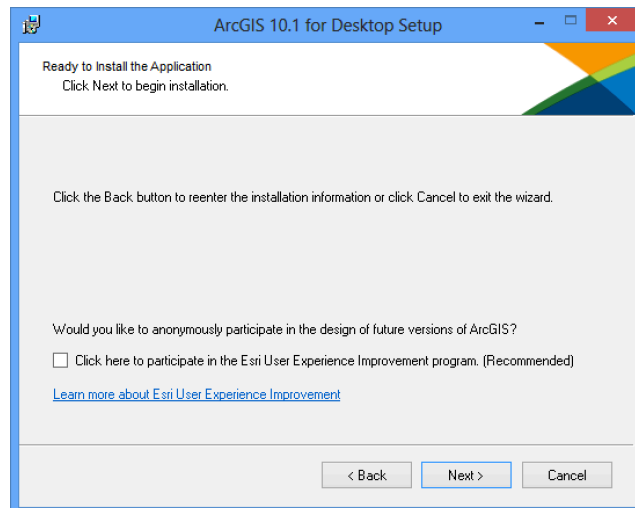
## Ruta de instalación de ArcGIS.



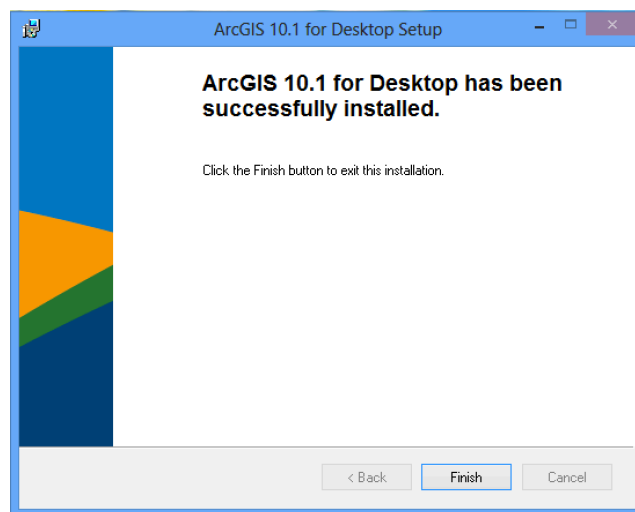
## Ruta de instalación de Python.



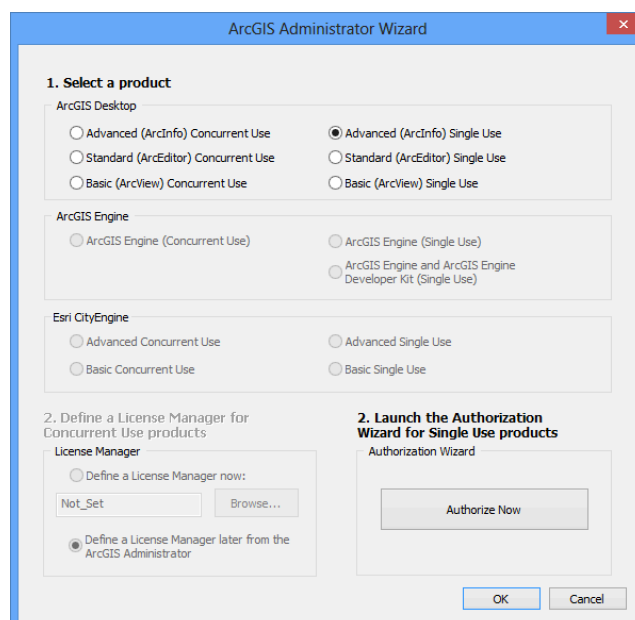
## Instalación.



## Fin de instalación.



## Configuración de licencia (Single Use).



## Información del usuario.

Software Authorization Wizard

**Authorization Information**  
We will use the following information to verify our records and authorize your use of the software. (\* required field)

\*First Name:

\*Last Name:

\*Organization:

Department:

\*Address 1:

Address 2:

\*City:

\*State/Province:

\*Zip/Postal Code:

\*Location:

\*Phone Number:

\*Email:

Comment:   
Optional user-defined authorization description.

< Back   Next >   Cancel

## Información del usuario (cont.).

Software Authorization Wizard

**Authorization information (continued)**  
We will use the following information to verify our records and authorize your use of the software. (\* required field)

\*Your Organization:

\*Your Industry:

\*Yourself:

The personal information you supplied is protected under Esri's privacy policy. If you want to view Esri's privacy policy, click the View button below.

< Back   Next >   Cancel

Número de autorización. El mismo lo provee el profesor del curso o persona autorizada por el Centro de Tecnologías de Información.

Software Authorization Wizard

**Software Authorization Number**  
Enter the authorization number for your software product

The authorization number consists of three letters and a series of numbers; similar to ABC123456789.

ArcGIS for Desktop, Advanced (Single Use)

EVA123456789

< Back   Next >   Cancel

Número para autorización de extensiones. El mismo puede activar todas las extensiones y lo provee el profesor del curso o persona autorizada por el Centro de Tecnologías de Información.

Software Authorization Wizard

**Authorize Software Extensions**  
Please select an option below.

Options

I do not want to authorize any extensions at this time.

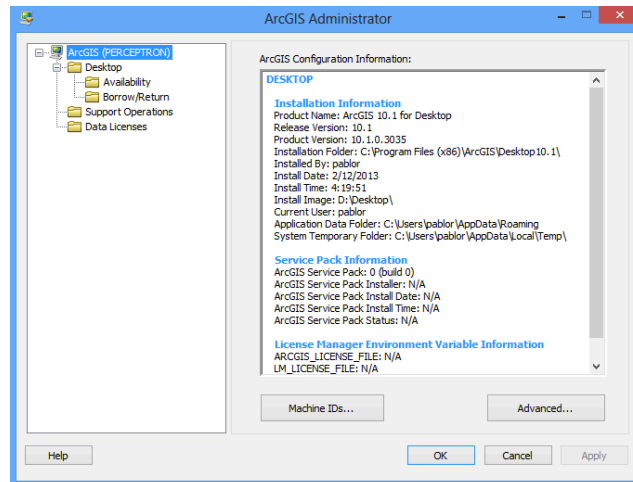
I have authorization number(s) to authorize one or more extensions.

Extensions

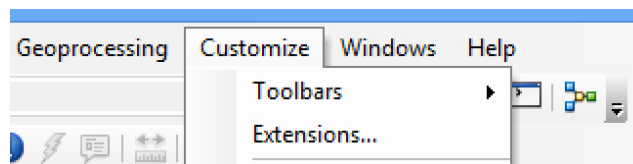
Feature	Authorization Number
3D Analyst	EVA123456789
Spatial Analyst	EVA123456789
Network Analyst	EVA123456789
Publisher	EVA123456789
Data Interoperability	EVA123456789
Geostatistical Analyst	EVA123456789
Tracking Analyst	EVA123456789
Schematics	EVA123456789

< Back   Next >   Cancel

Fin de configuración.



Las extensiones ArcGIS 3D Analyst, ArcGIS Geostatistical Analyst, ArcGIS Network Analyst, ArcGIS Publisher, ArcGIS Schematics, ArcGIS Spatial Analyst y ArcGIS Tracking Analyst no están habilitadas para su uso luego de la instalación. Éstas se habilitan por medio de la misma herramienta en Customize -> Extensions...



El usuario selecciona las extensiones que interesa utilizar.

