

# **RASSIERE** **RETROFITTING**

UPRM INDUSTRIAL ENGINEERING • NSF GARDE

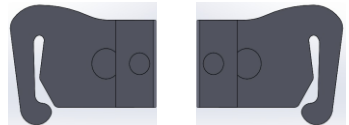


## INSTALLATION STEPS



## USER MANUAL

1) Once the pieces are removed from the packaging separate each other



2) Reach for the front closing brassiere to start the installation

3) Take each piece and slide it towards the brassiere holes from upside down



4) Put on the brassiere normally

5) Now take each counterpart and put them together for final closure



**Caution: Putting arms together forcing overlapping may open the mechanism**

\*Not Machine Washable gently use soap and water