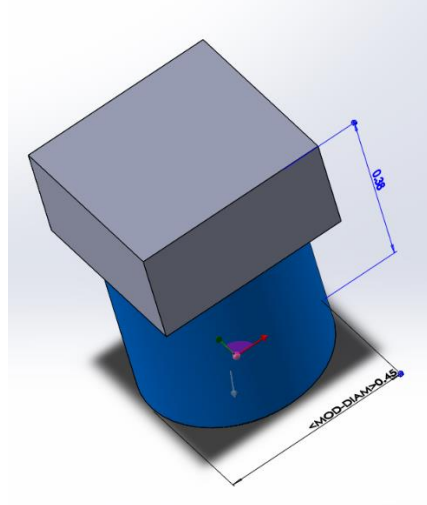
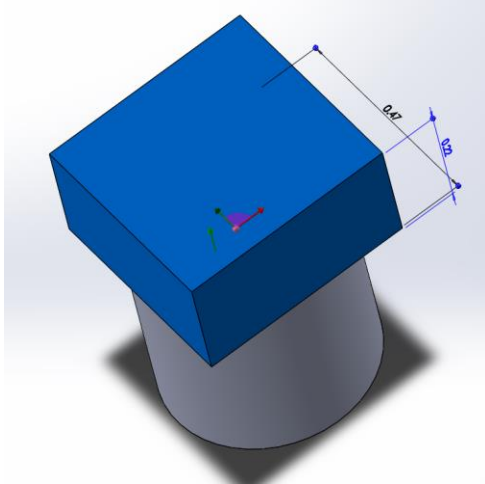
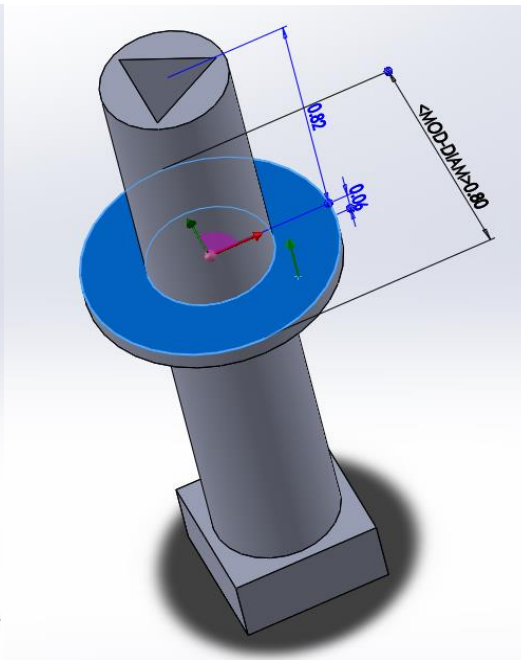
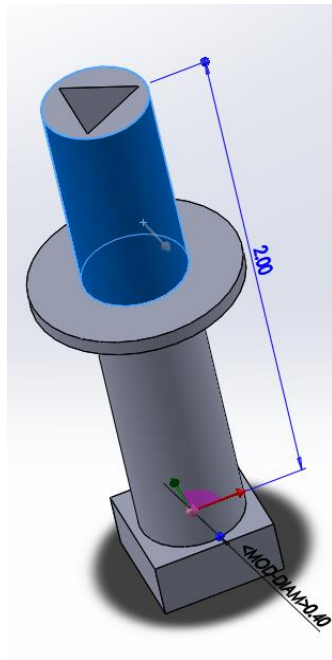


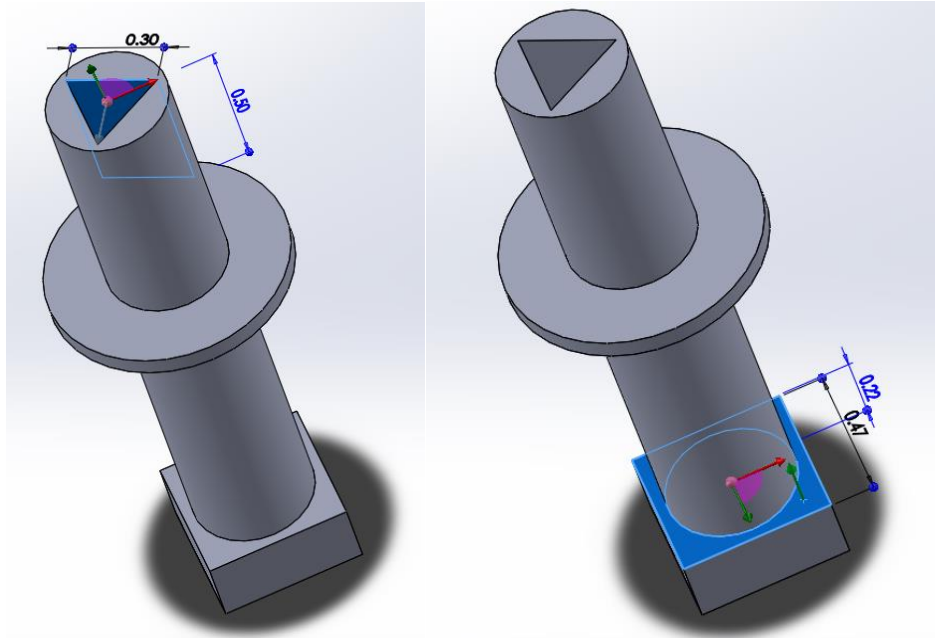
Lightbulb changer - Drawings with measurements

Part# E1

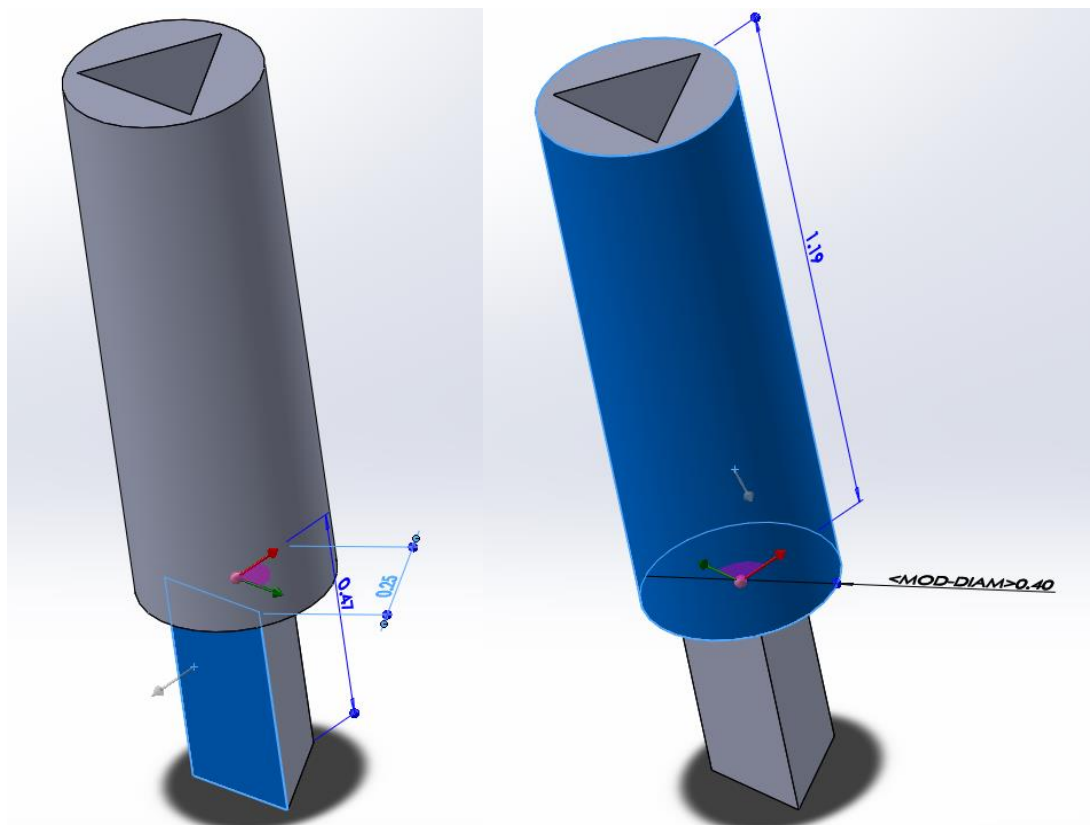


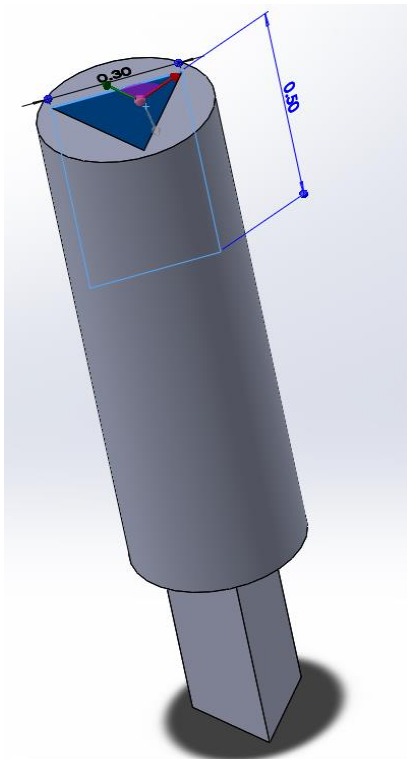
Part# E2



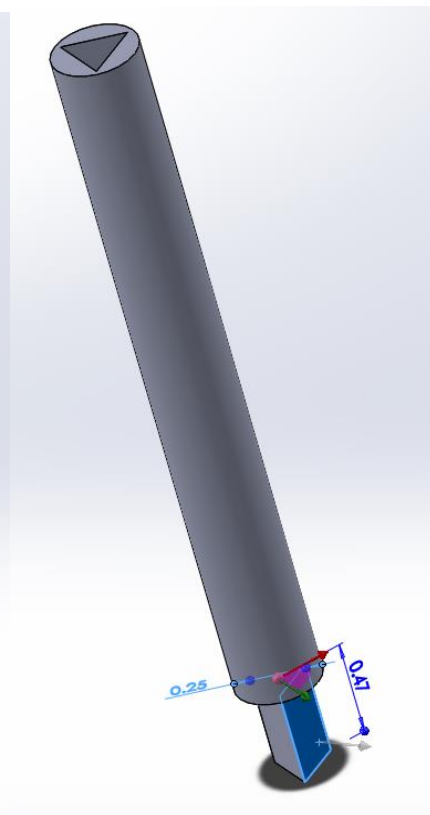


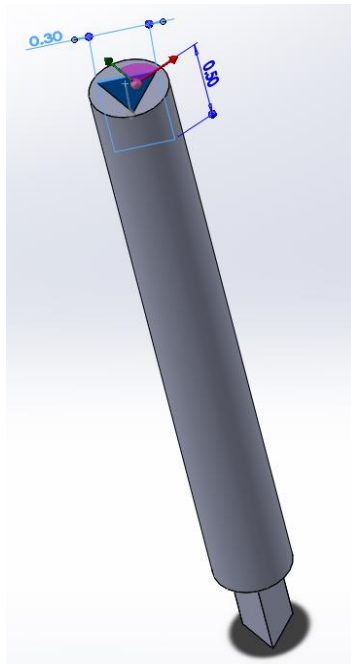
Part# E3



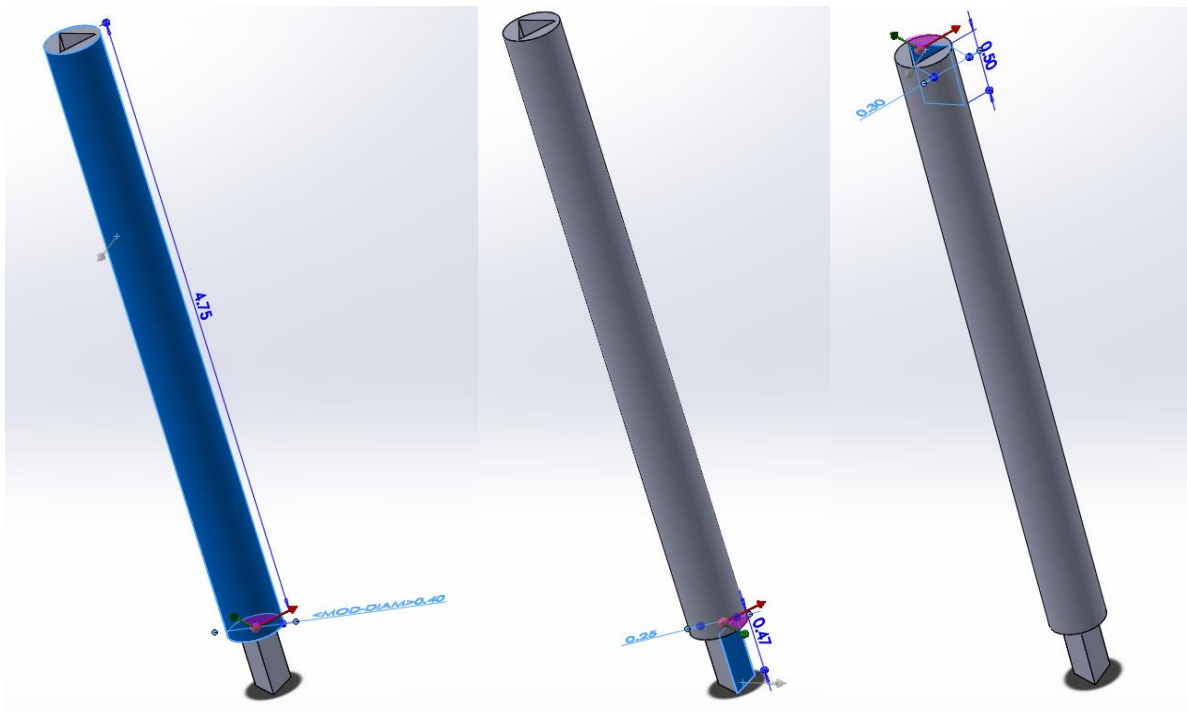


Part# E4

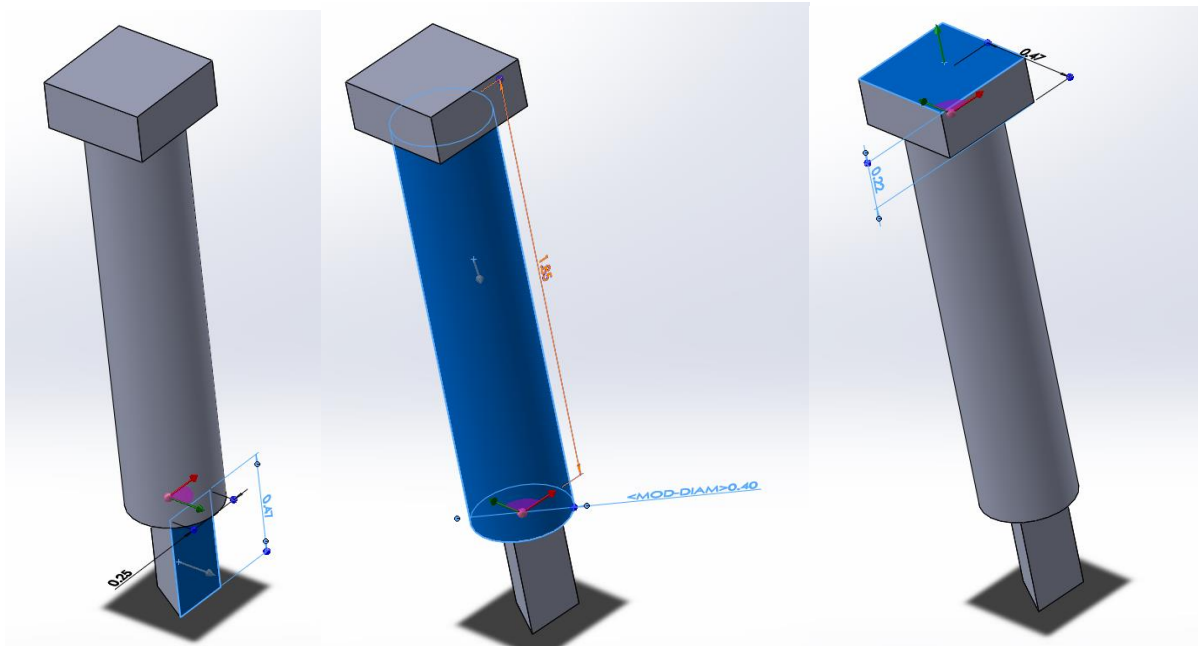




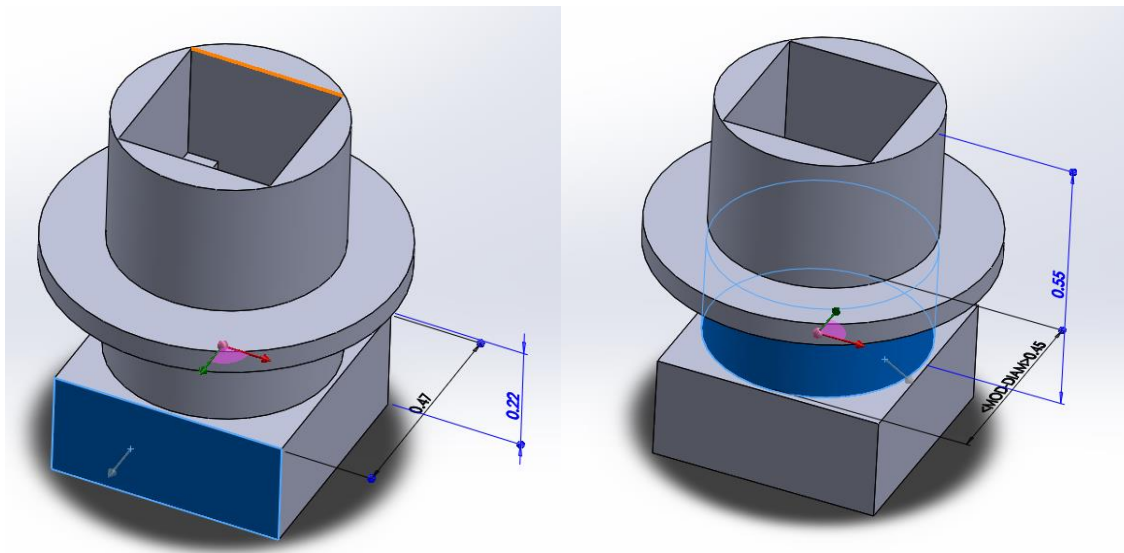
Part# E5

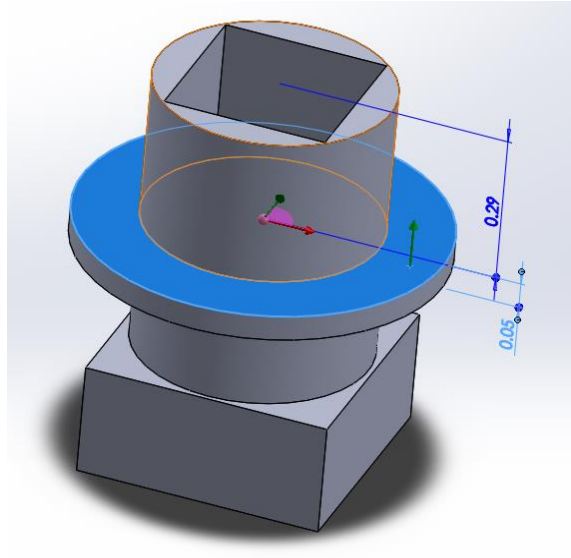


Part# E6

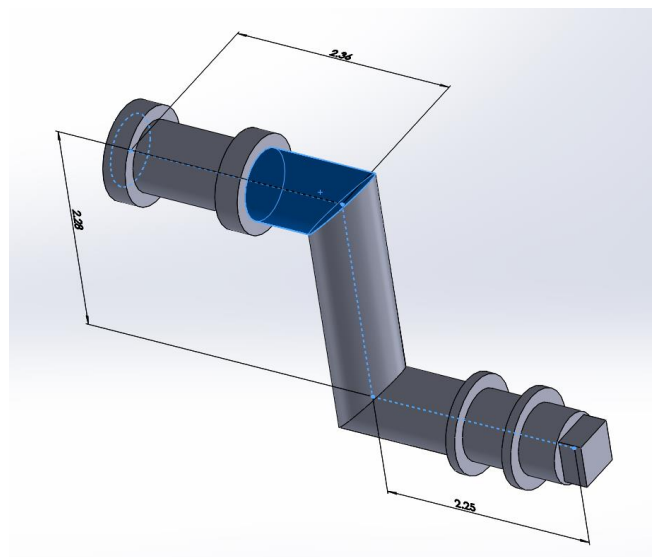


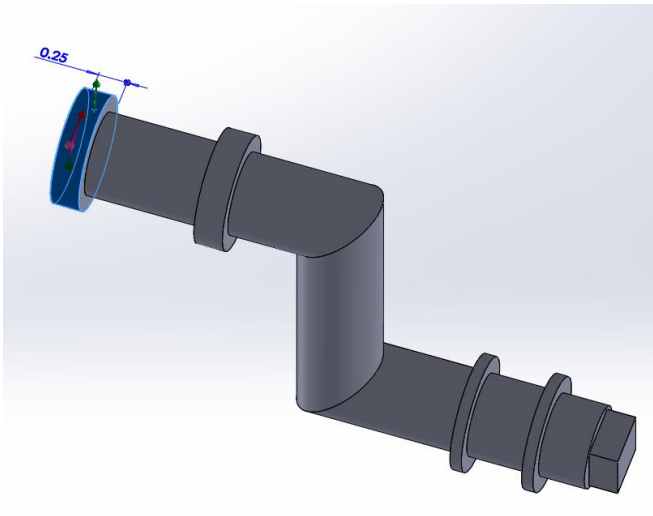
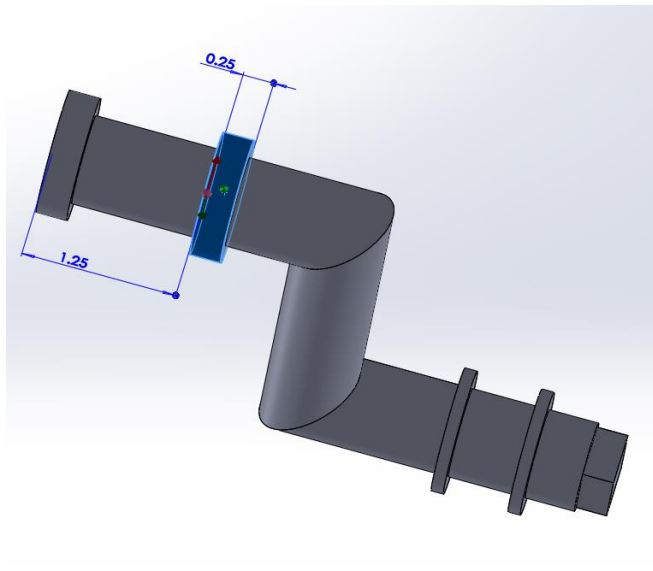
Part# E7

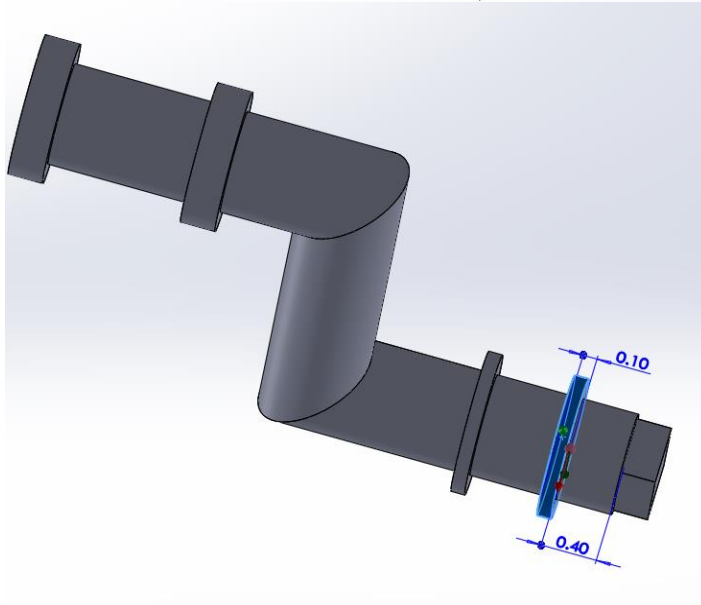
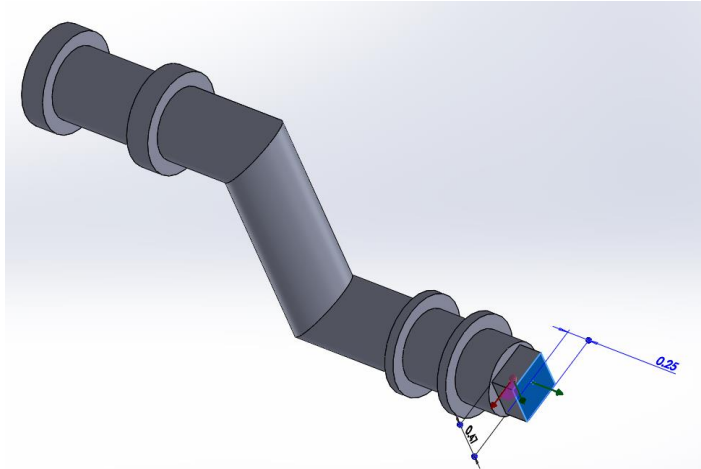


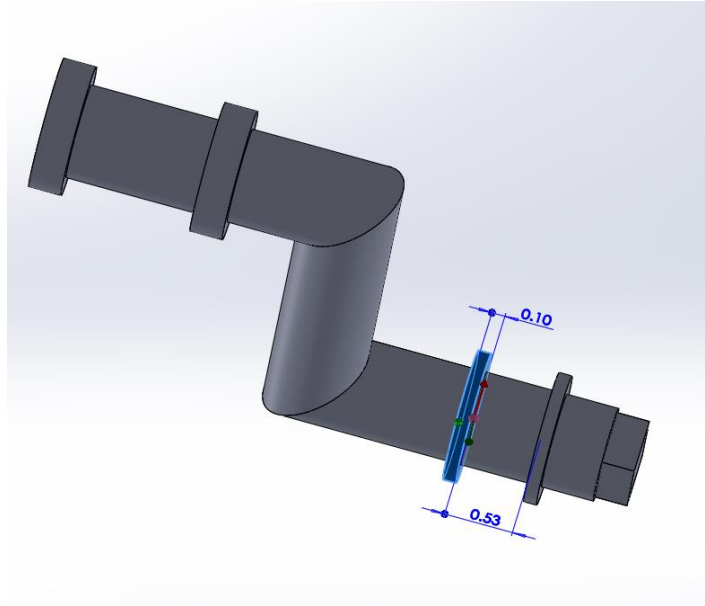


Part# M1

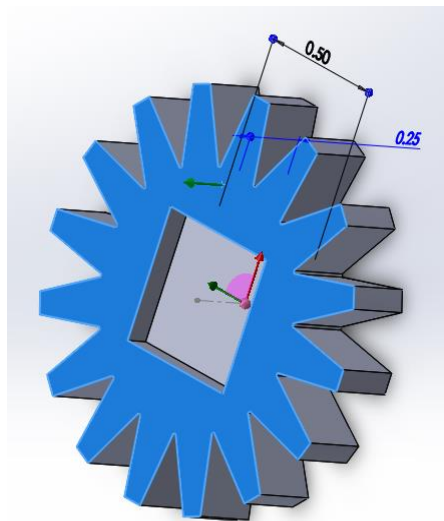


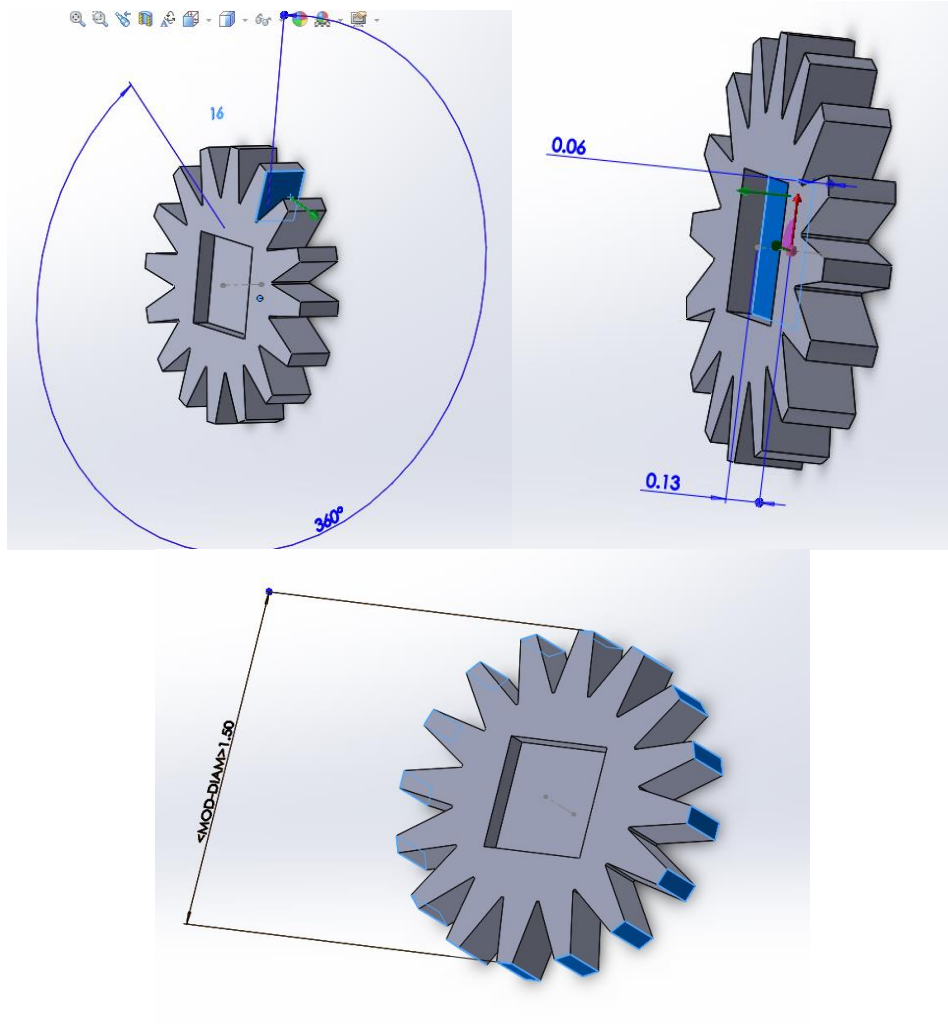




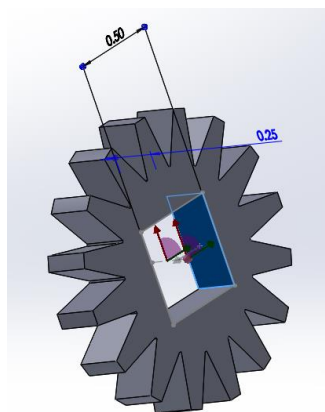


Part# Gear (Qty. 3)

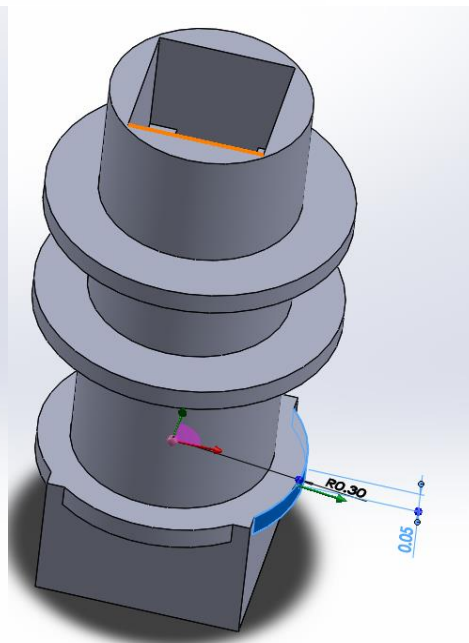
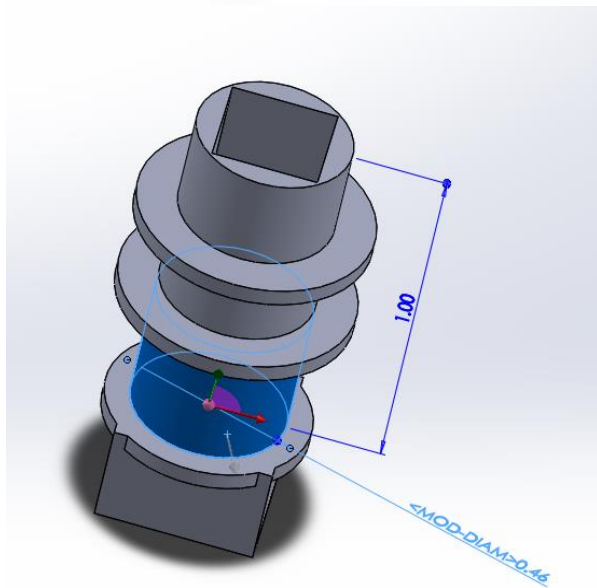
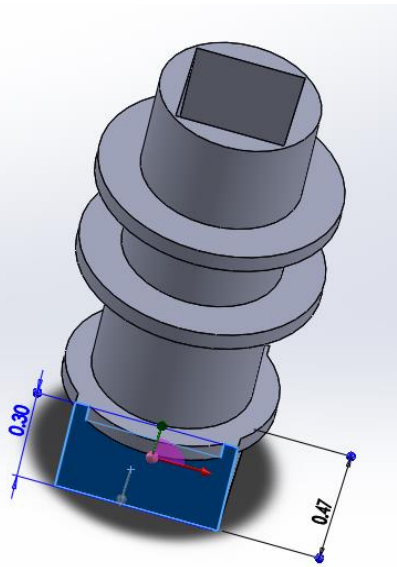
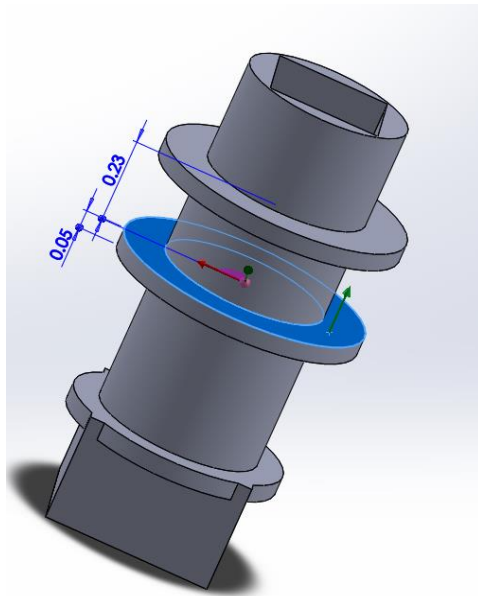


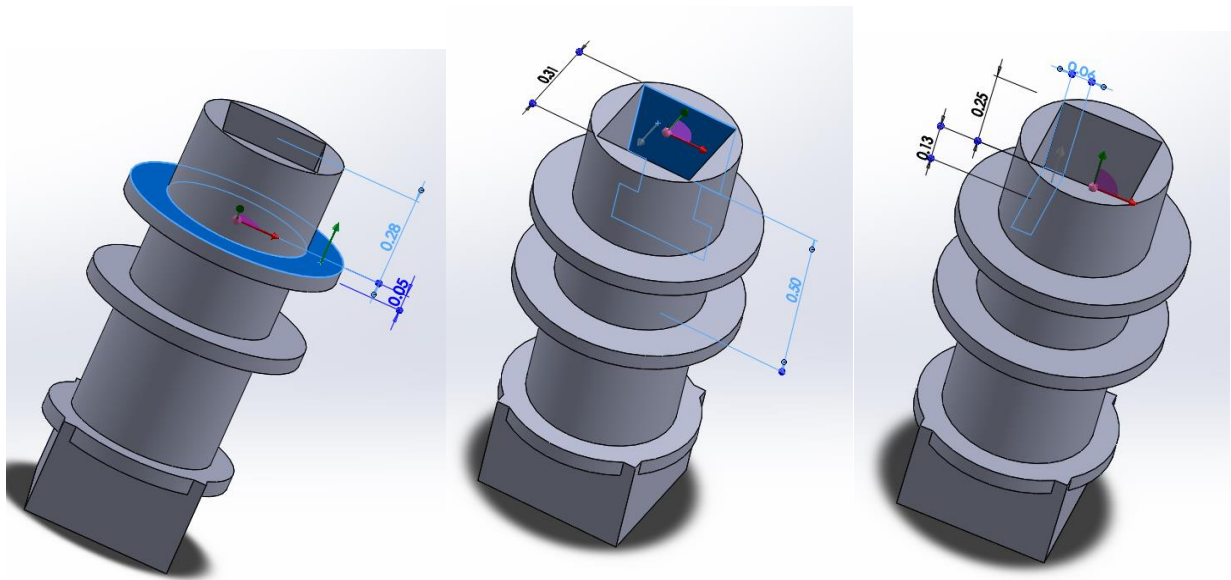


Part# Gear Handle

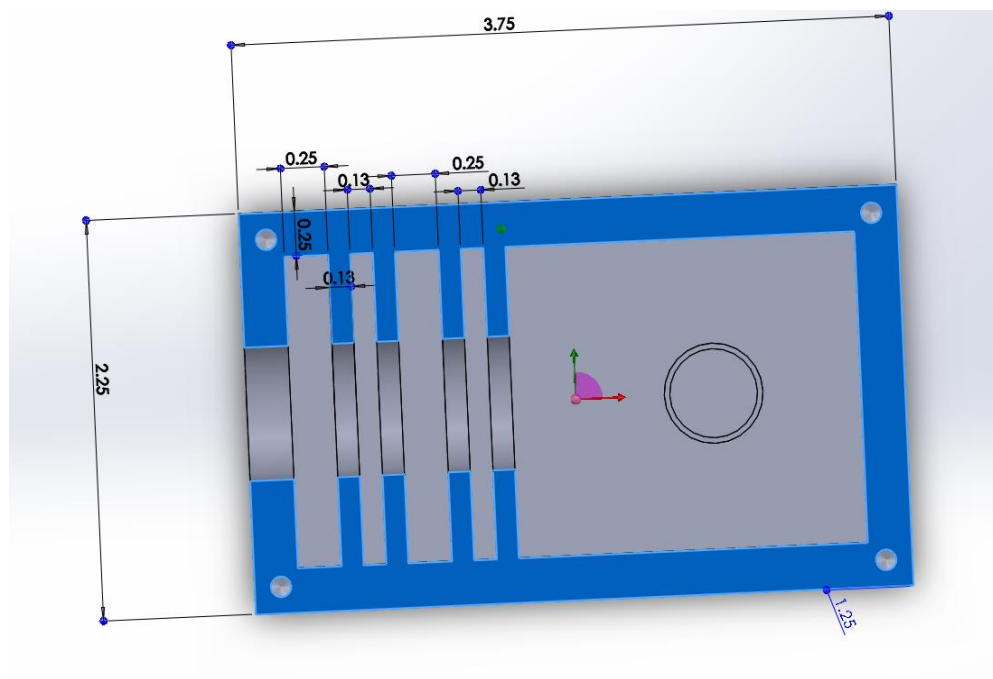


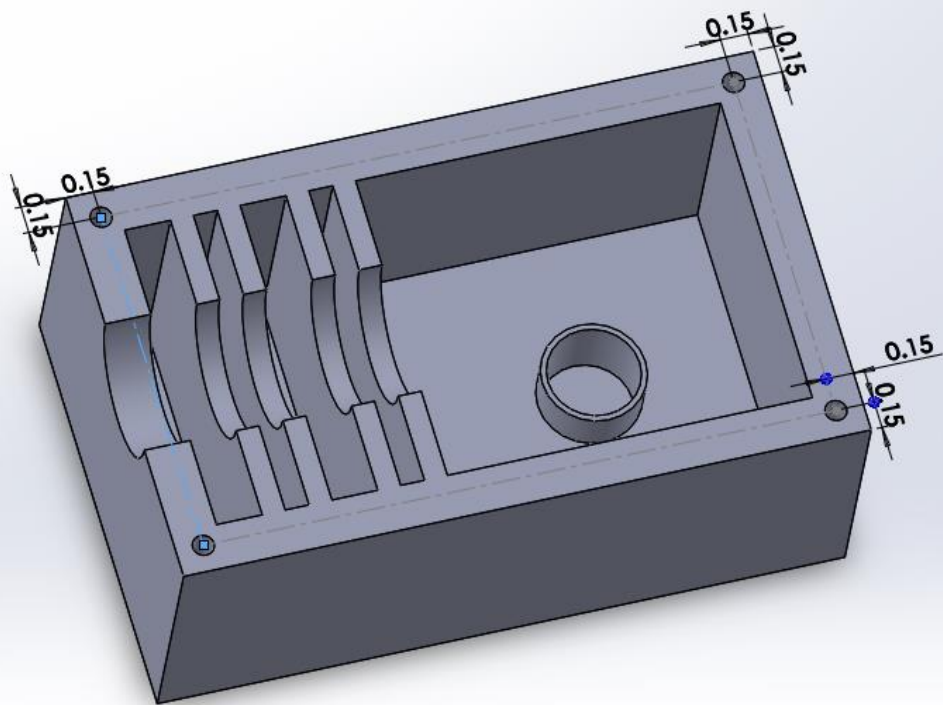
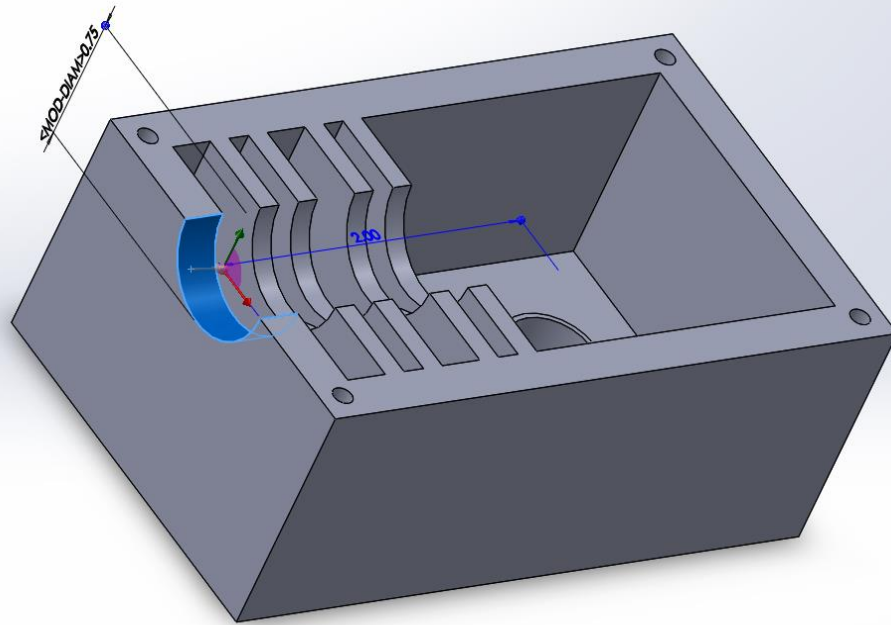
Part#M2

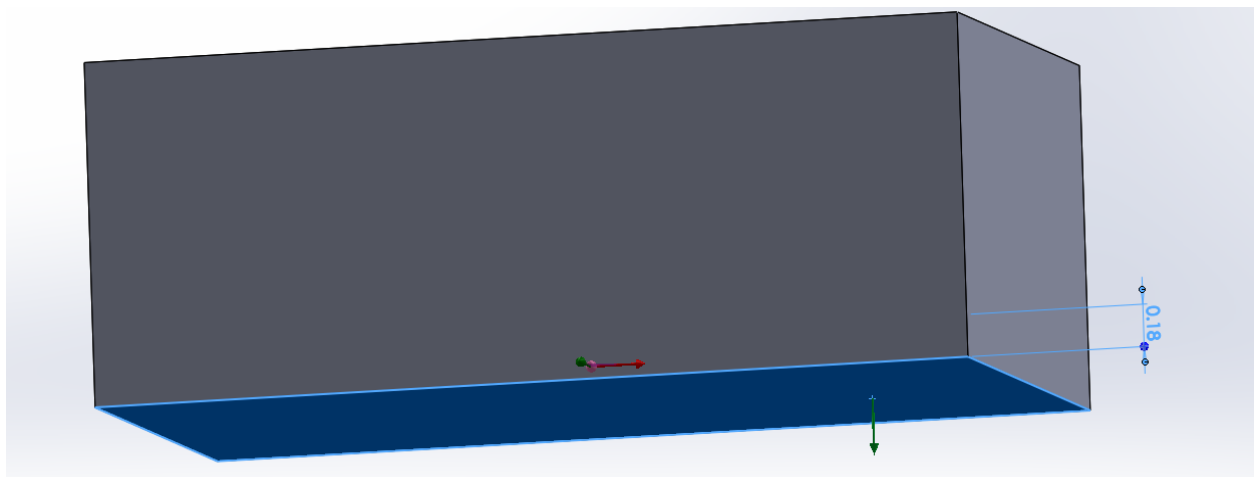
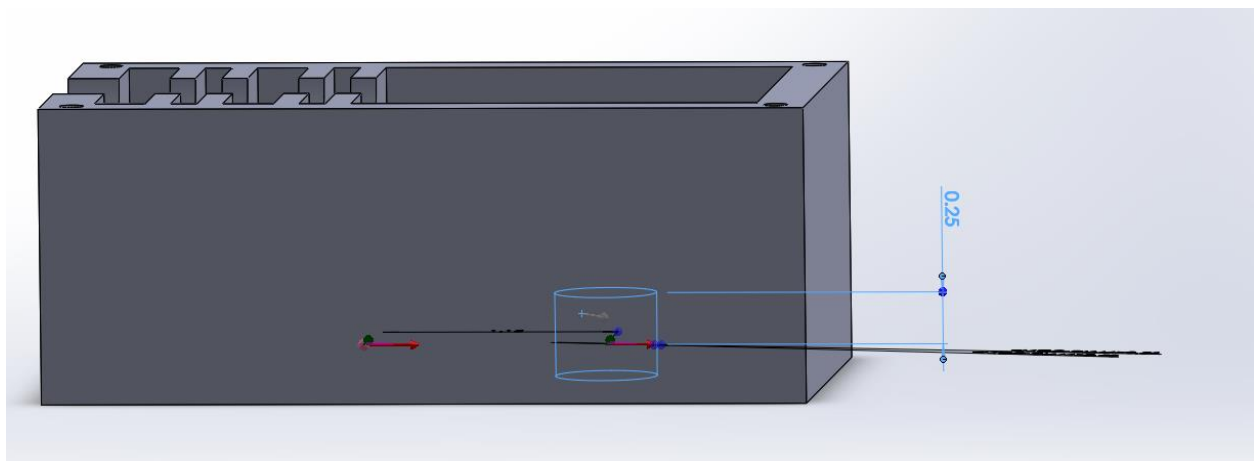
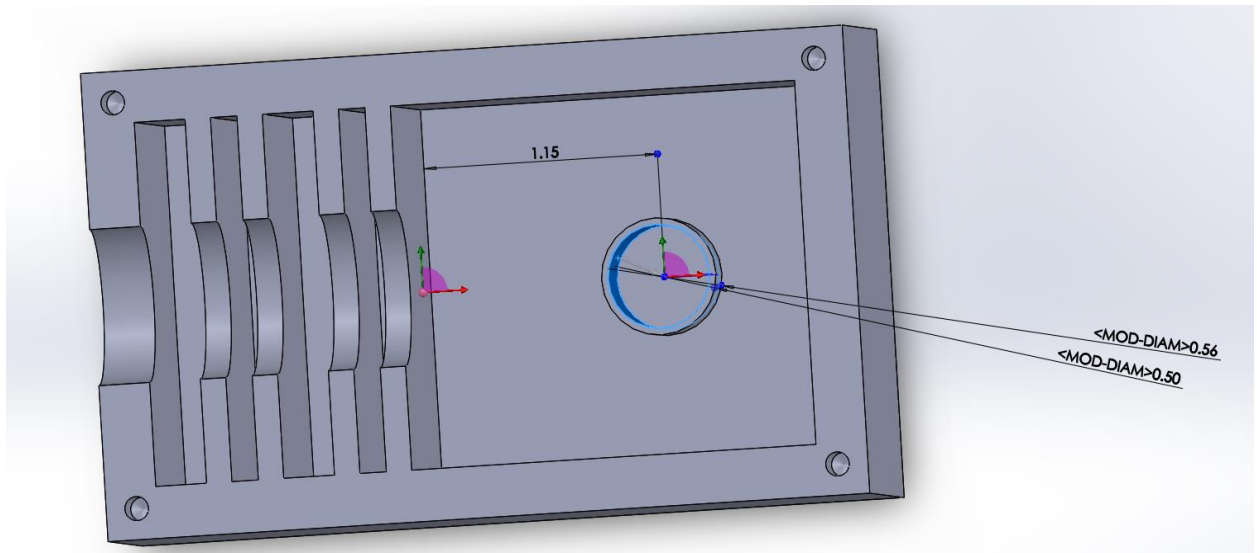




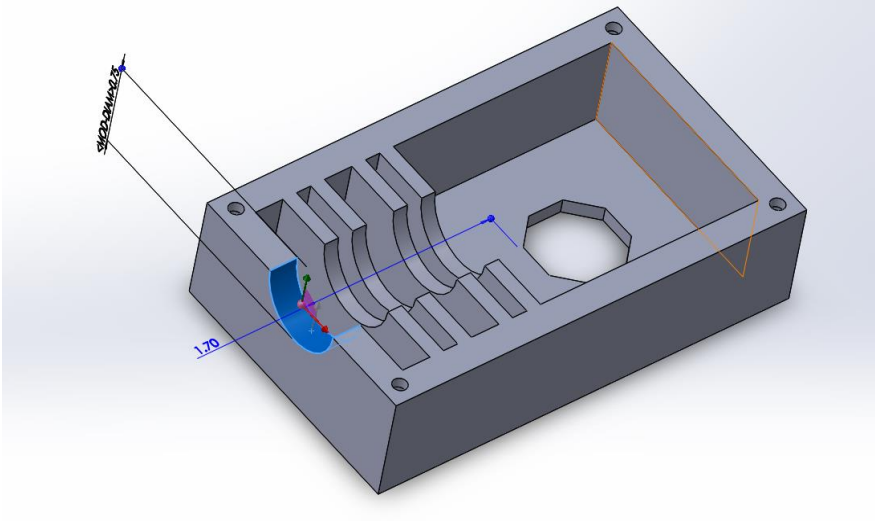
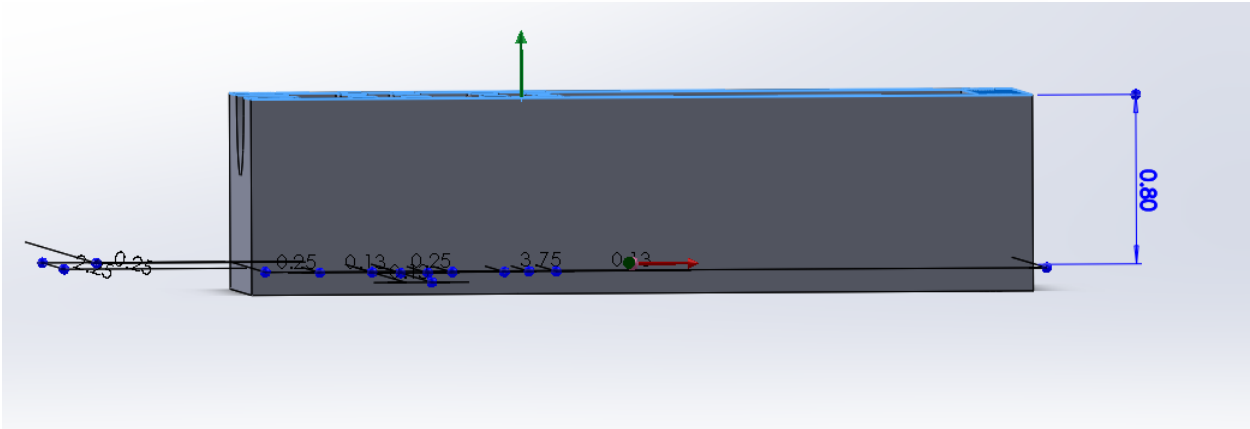
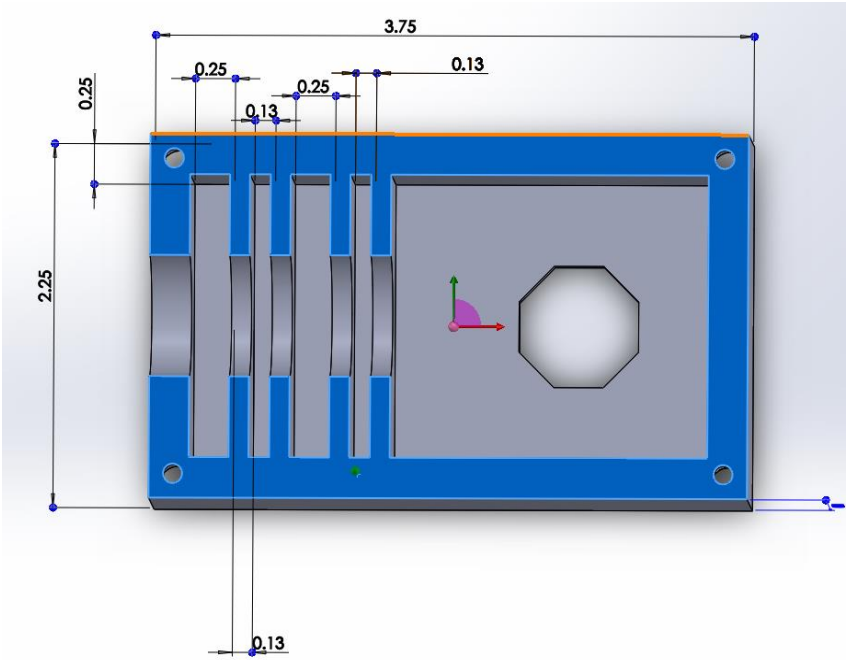
Part# B1

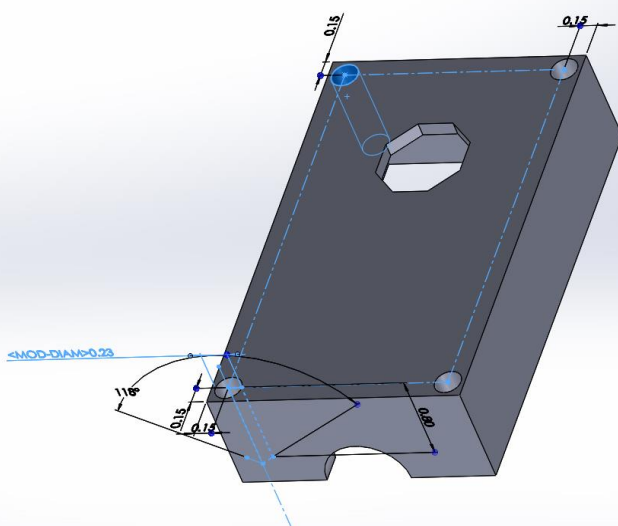
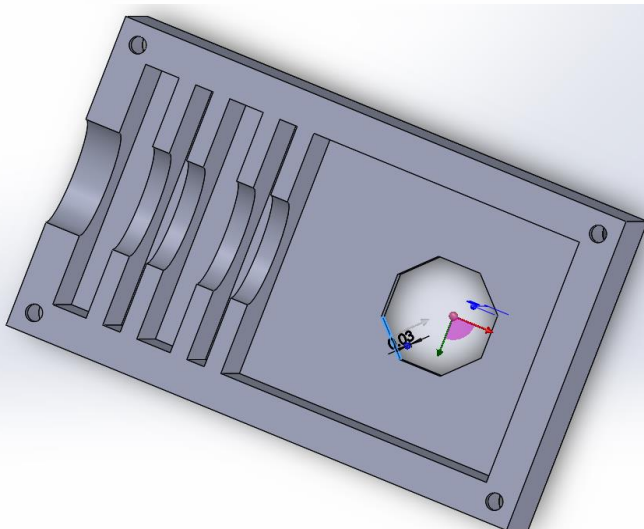
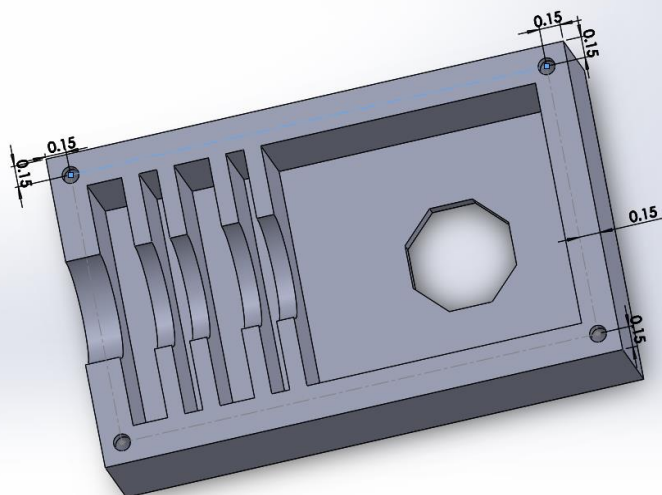




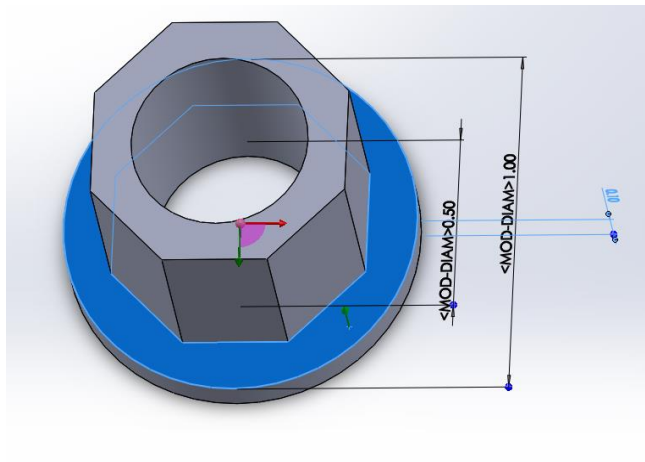
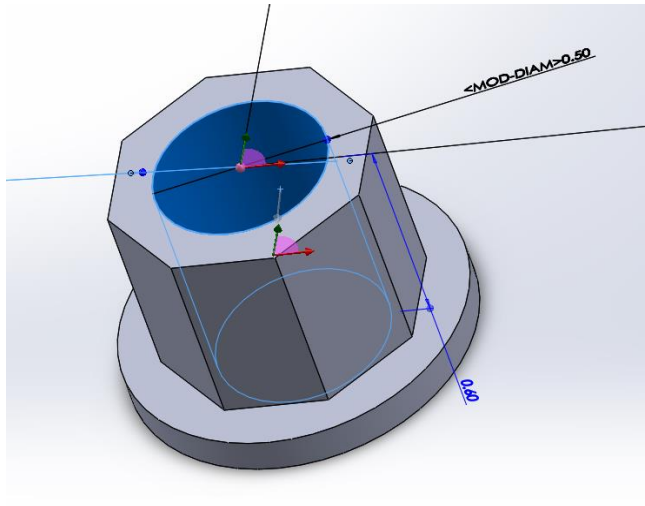


Part# B2

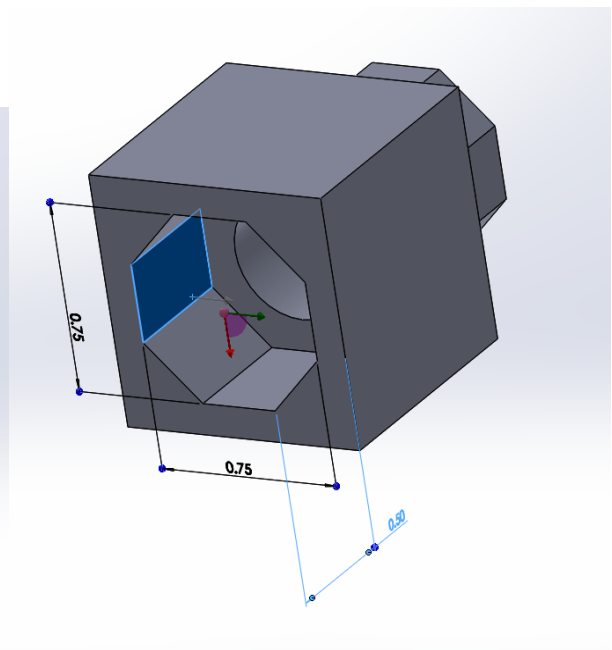
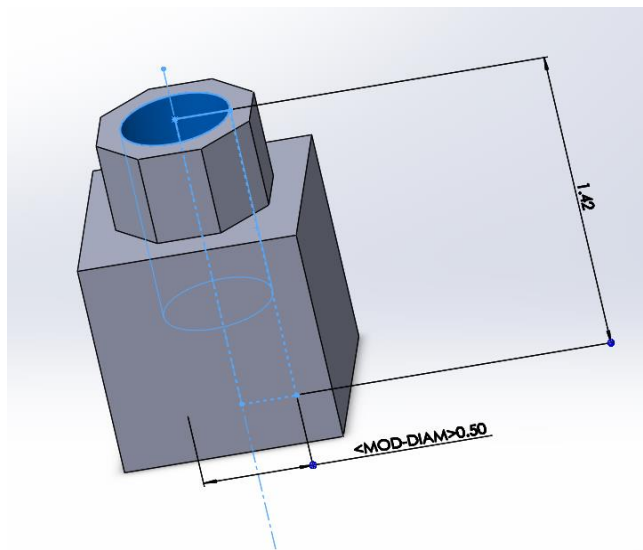
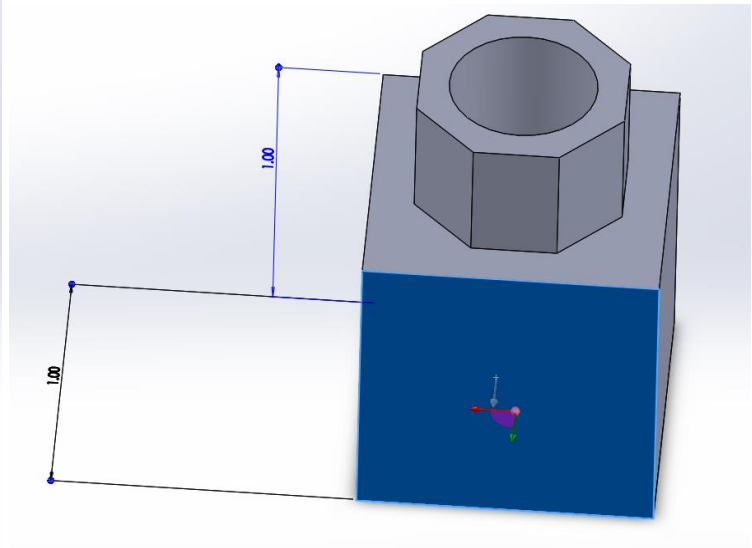
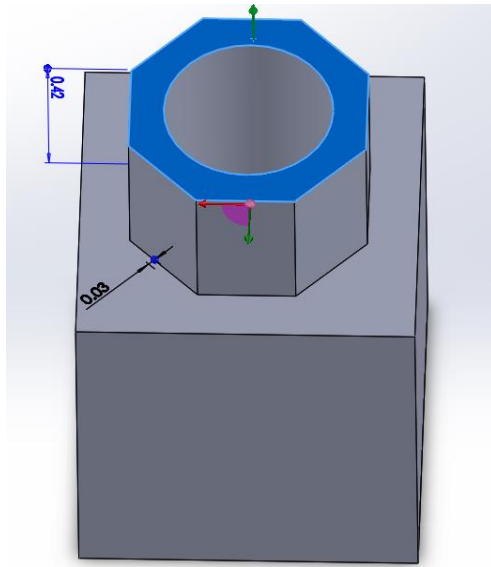




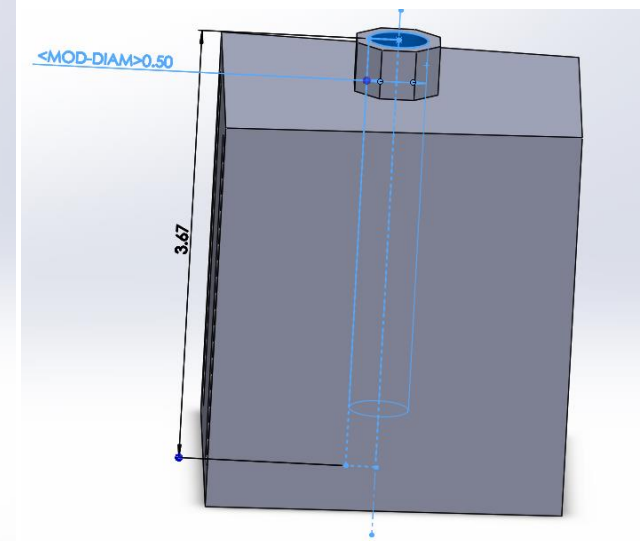
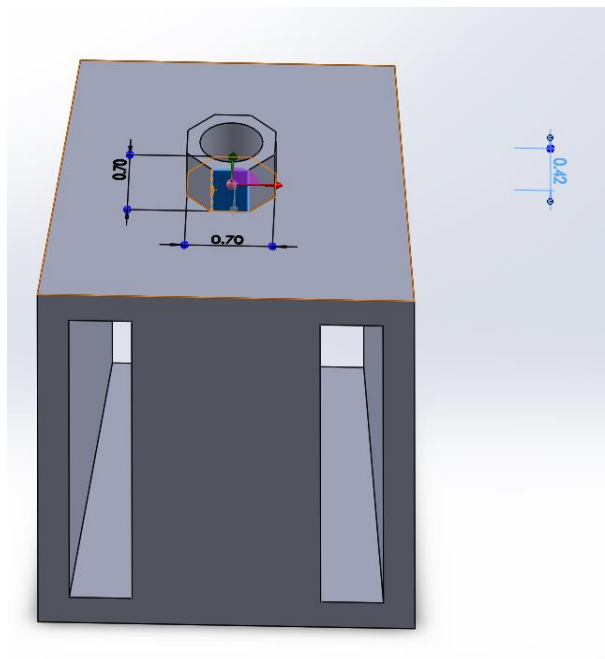
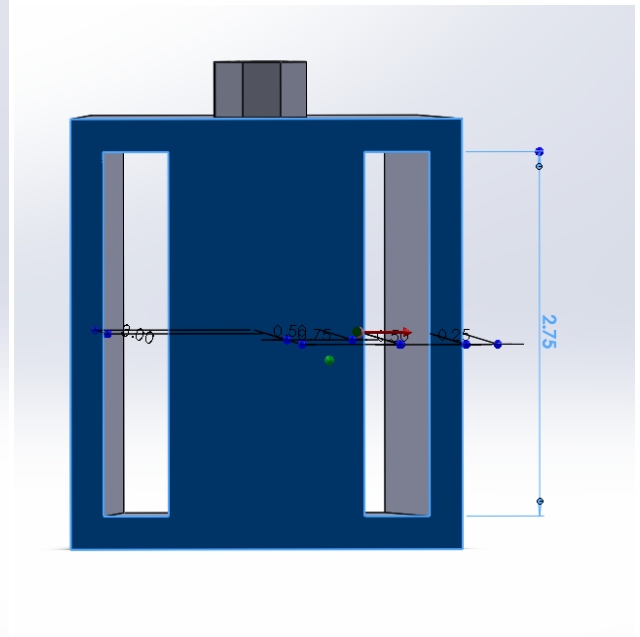
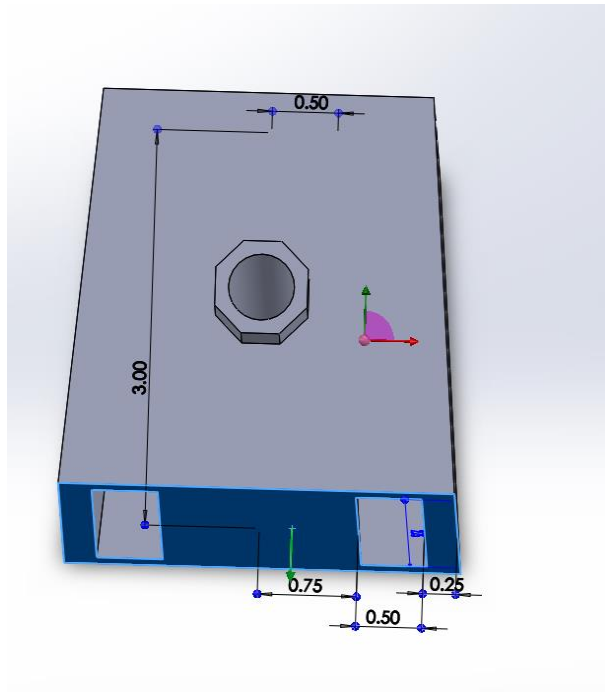
Part# Union B

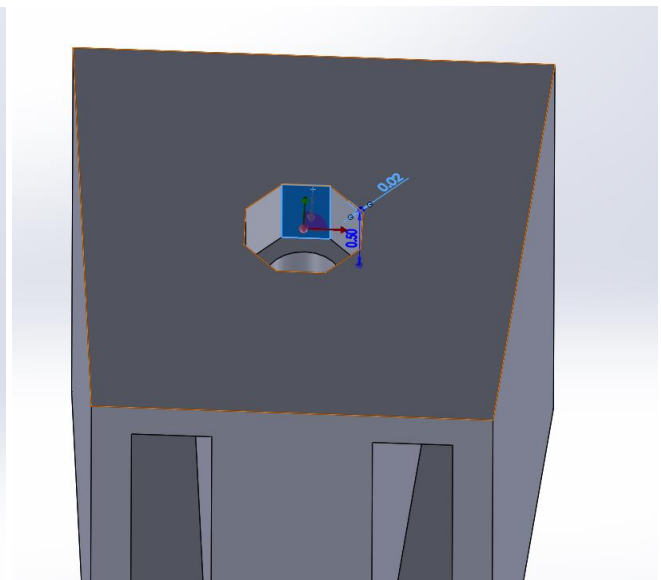
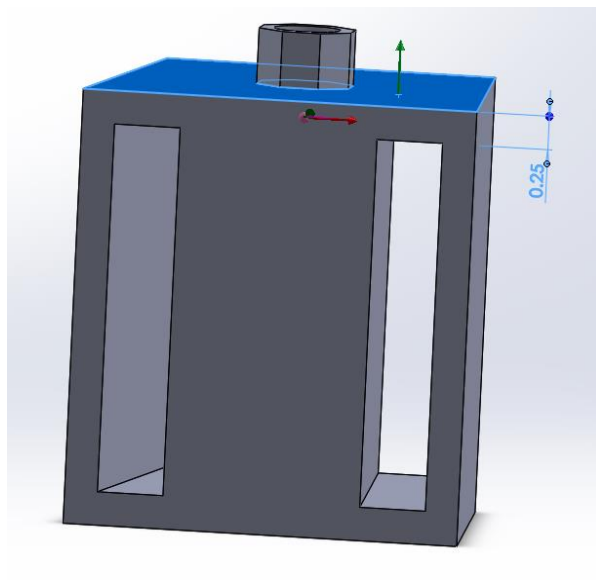


Part# C1

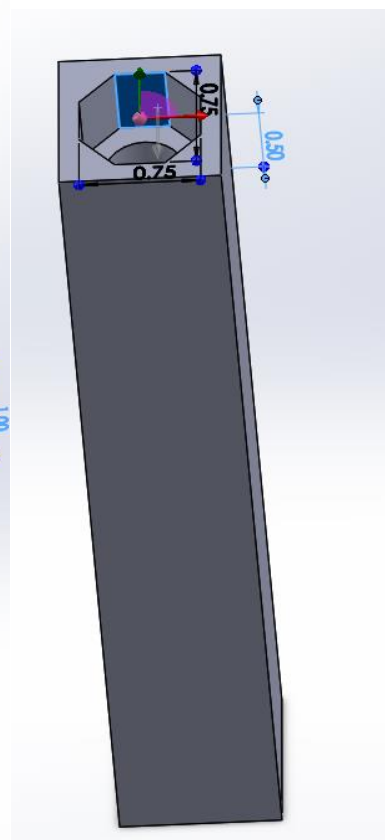
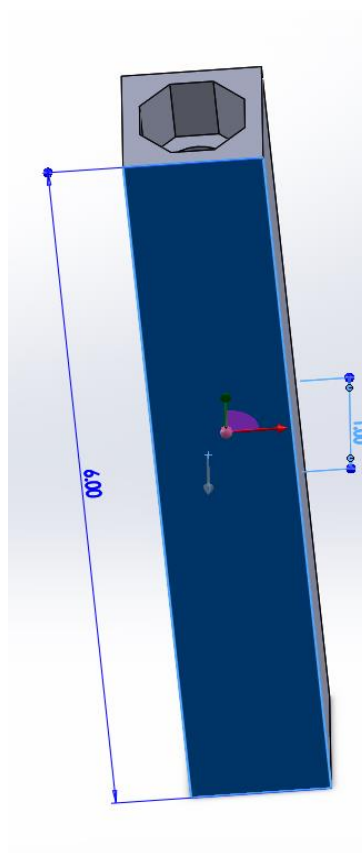


Part# A1

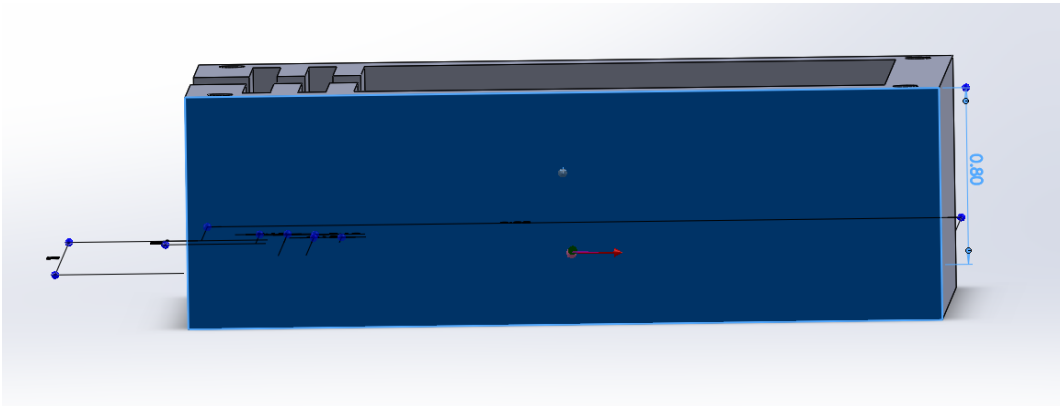
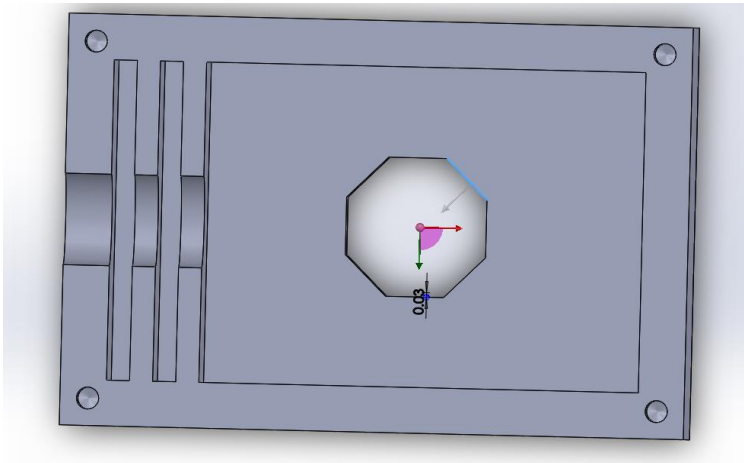
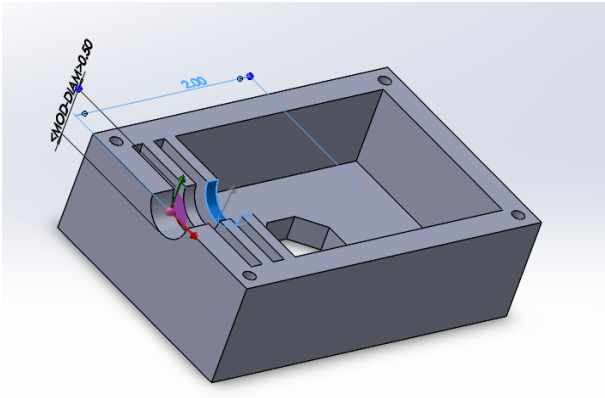
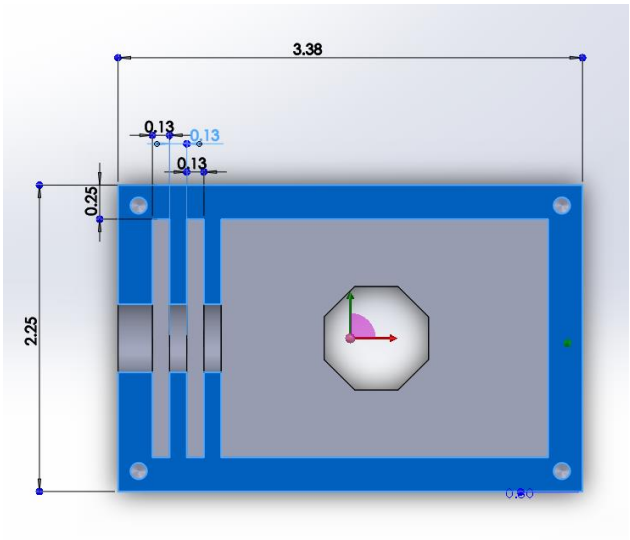


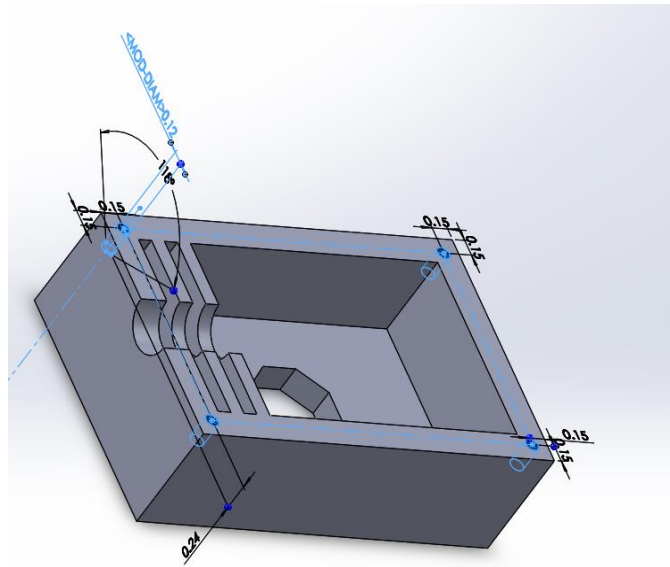
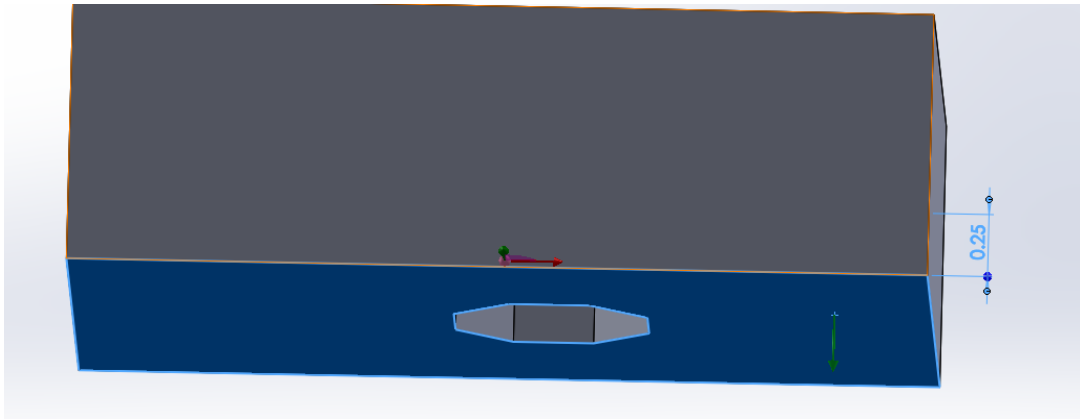


Part# C2

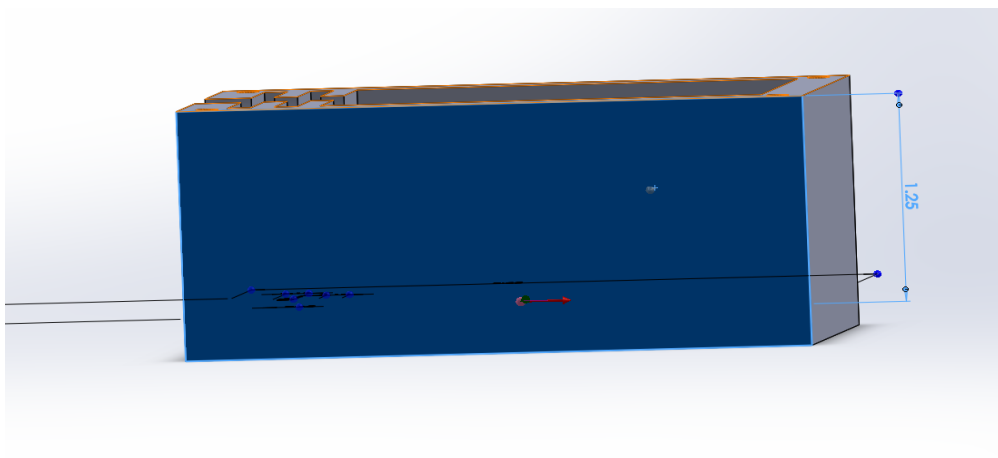


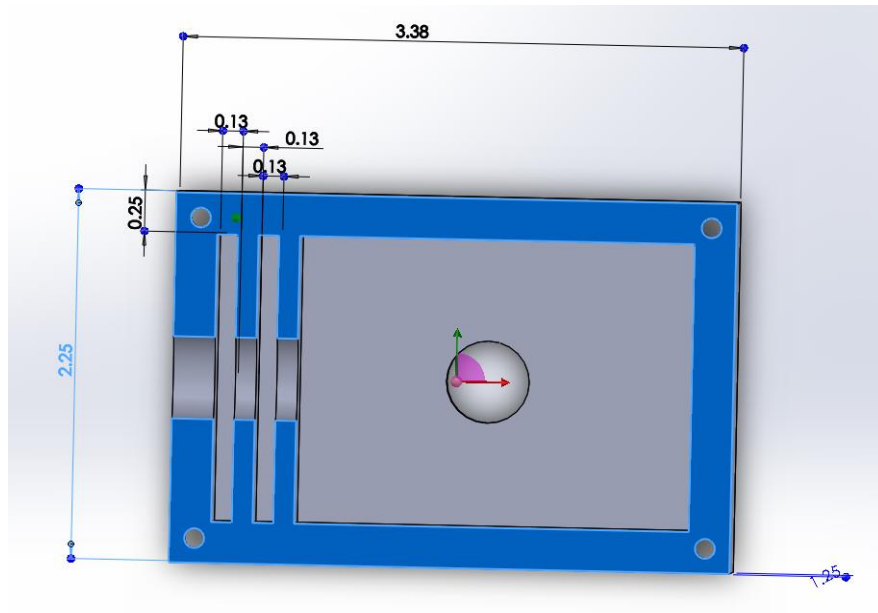
Part# BS1





Part# BS2

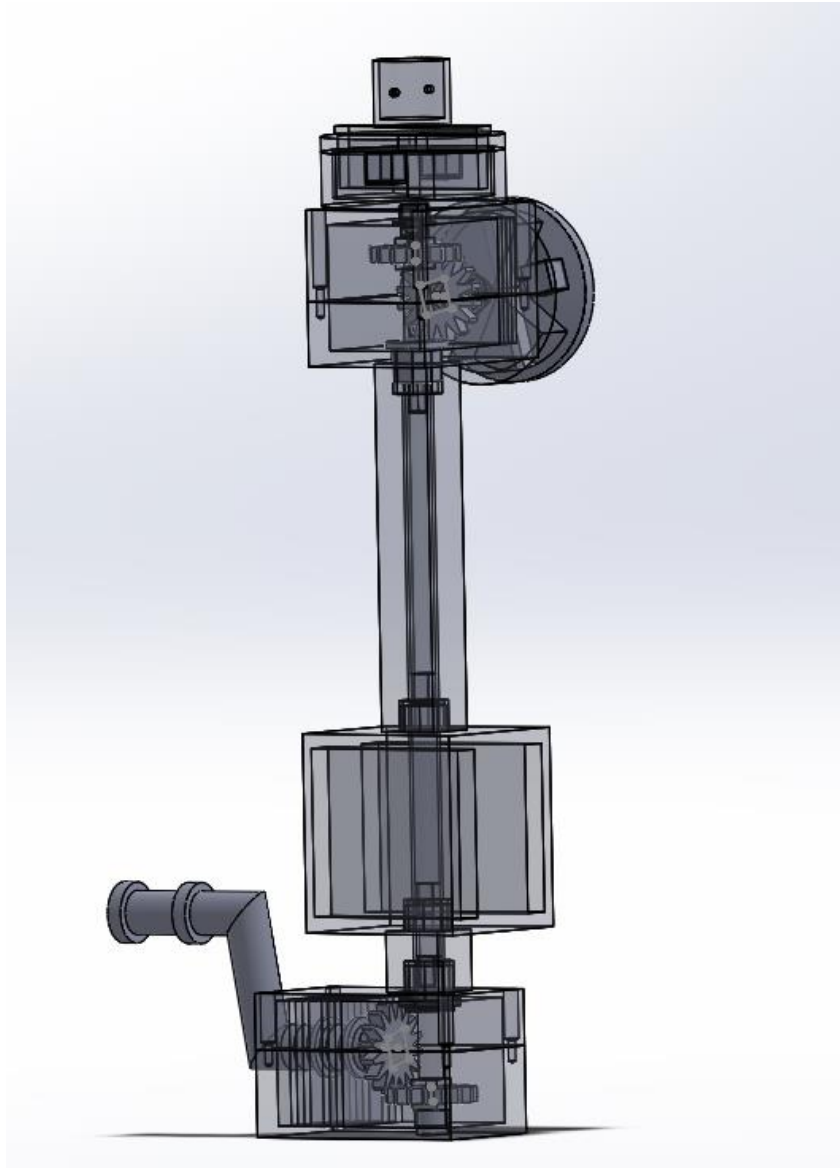




Final Product

ERGONOMIC LIGHTBULB CHANGER FOR PEOPLE WITH UPPER LIMB PROSTHESIS

INSTRUCTIONS MANUAL

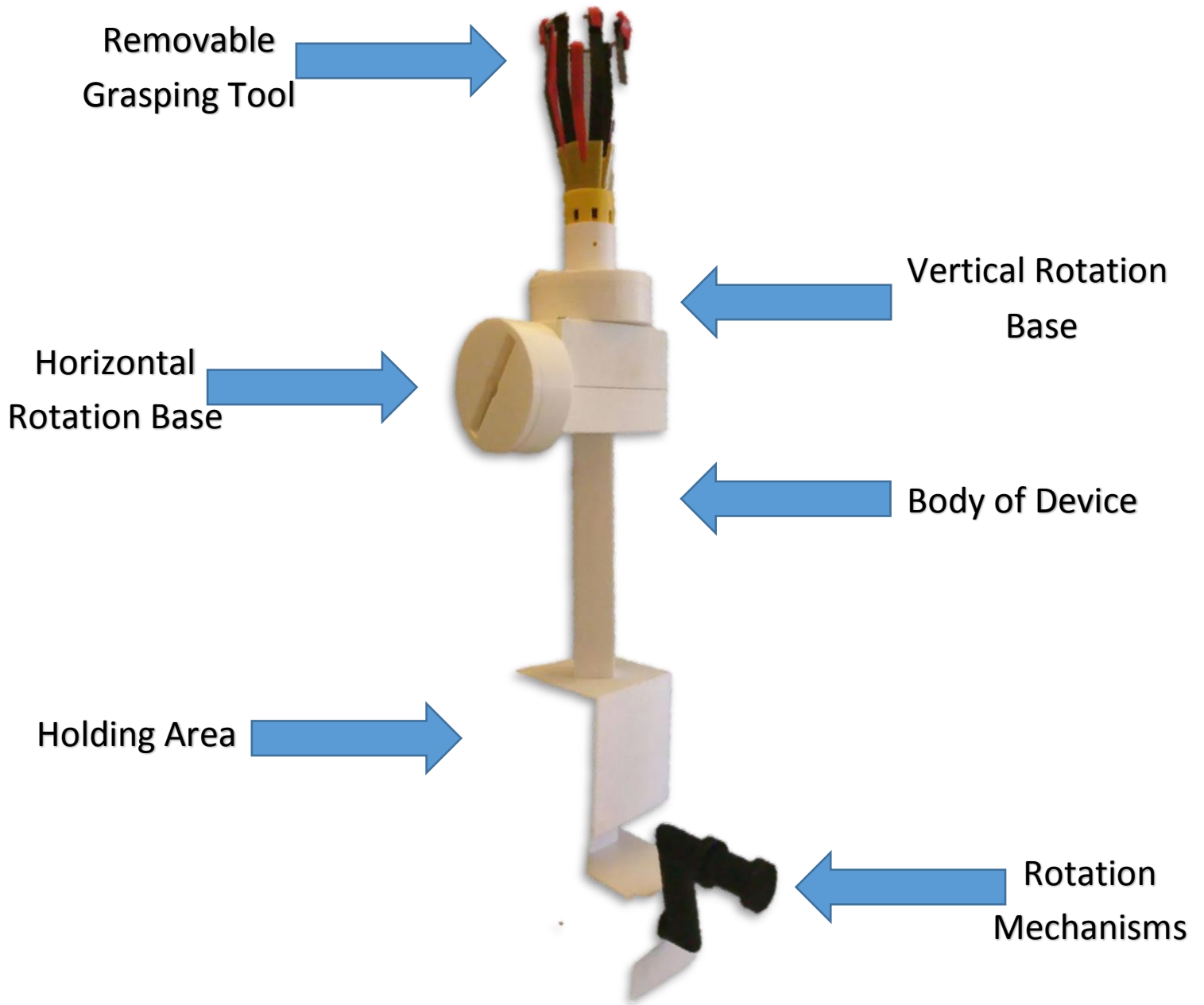


Read before handling the device

Handling Instructions

1. Before using this product read all the precautions that must be taken in order to prevent accidents.
2. Every user with a disability must use the device with supervision until is capable of understanding the mechanism and handling of the product with expertise.
3. Avoid changing the lightbulb without proper supervision.
4. Undertake all the precautions when using a stair in order to reach the lightbulb.
5. Turn off the lightbulb that will be changed, wait approximately 5 minutes before using the device.
6. If a lightbulb is located in the ceiling use the upper rotation base. If the lightbulb is located in the wall (horizontal axis) remove the grasping removable tool and place it in the horizontal rotation base.
7. Do not use the device to change exterior lightbulbs if it is raining. Wait until the area is dry and free of any accident.
8. Do not use this device with broken lightbulbs.
9. If the device do not enter into lightbulb, do not force it. Seek for help.
10. Do not use this product if a part fall of or is broken.

Device Parts



Cleaning and Storage

1. The device can be cleaned using a wet towel.
2. Avoid submerging the device in water with any chemical that could damage the core or metal pieces.
3. Storage area must be dry, avoid storage with high percent of humidity.
4. Do not separate the fixed parts of the device, this could damage severely the functionality.
5. Put the device in a hard box container that could protect the product from any harm.

Contact Information

Emanuel Gonzalez Torres

Email: Emanuel.gonzalez5@upr.edu

Verónica Baez Vidro

Email: veronica.baez1@upr.edu

Department of Industrial Engineering UPR Mayaguez

Tel: 787-832-4040, Extension: 3819, 3204 Fax: 787- 265-3820

Email: inin@uprm.edu

Web: ininweb.uprm.edu