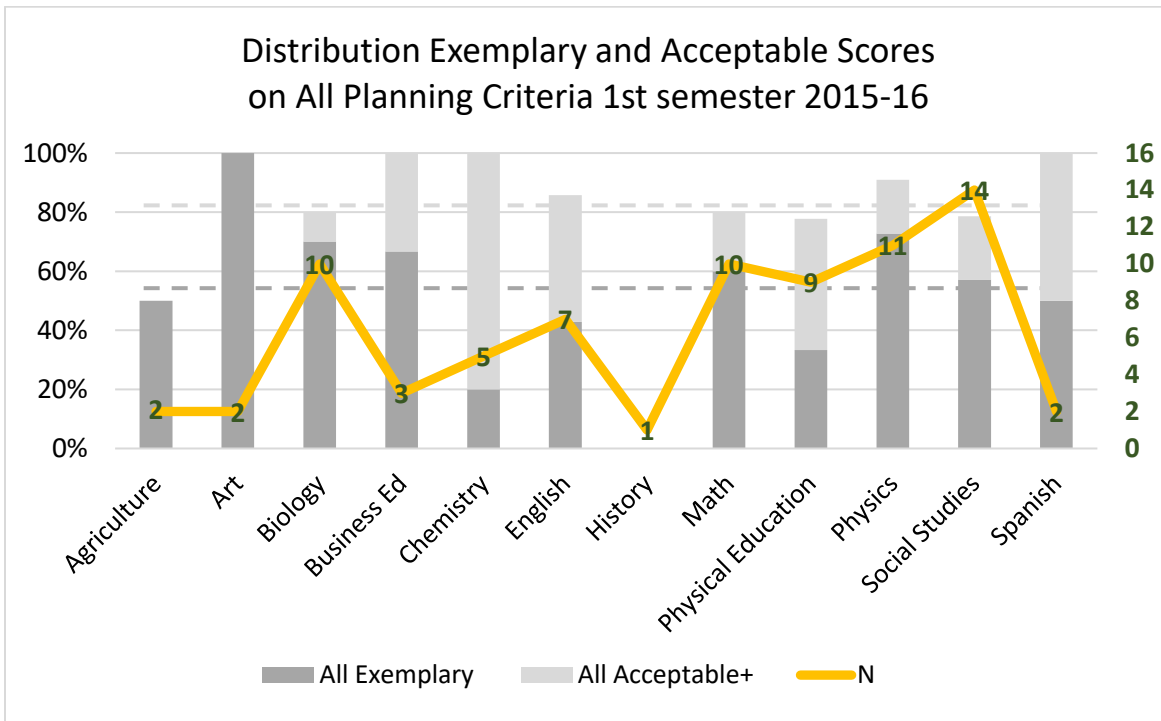


EDPE 3129 Blog Assignment Planning Performance Summary and Charts

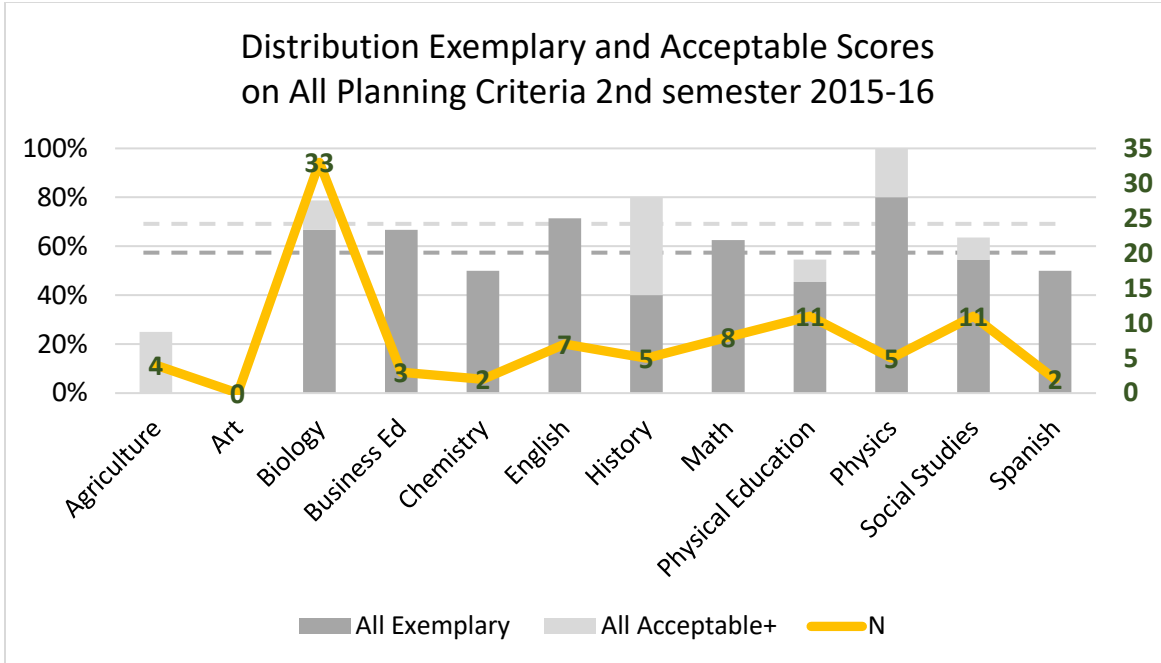
Eight of the eleven rubric criteria used on the EDPE 3129 Blog Assignment are relevant to the InTASC planning criteria. The chart below shows the distribution of acceptable or better ratings on these eight criteria across various *expected teaching areas*.

During the first semester of 2015-16, 76 students completed the EDPE 3129 course. Of these, 42 (55% - - -) were rated exemplary on all Blog Assignment criteria corresponding to Planning. Another 21 were rated acceptable or better on these criteria. In total, 83% (- - -) rated exemplary or acceptable on all planning criteria. The next chart shows the distribution of all acceptable or better ratings with respect to the eight criteria related to InTASC Planning across the *expected teaching areas* for the first semester of 2015-16. As before, the stacked columns represent percentages of all exemplary and all acceptable or better ratings in expected teaching areas. Dashed lines correspond to percentages of these ratings among all students. The orange line represents the number of students from each expected teaching area.

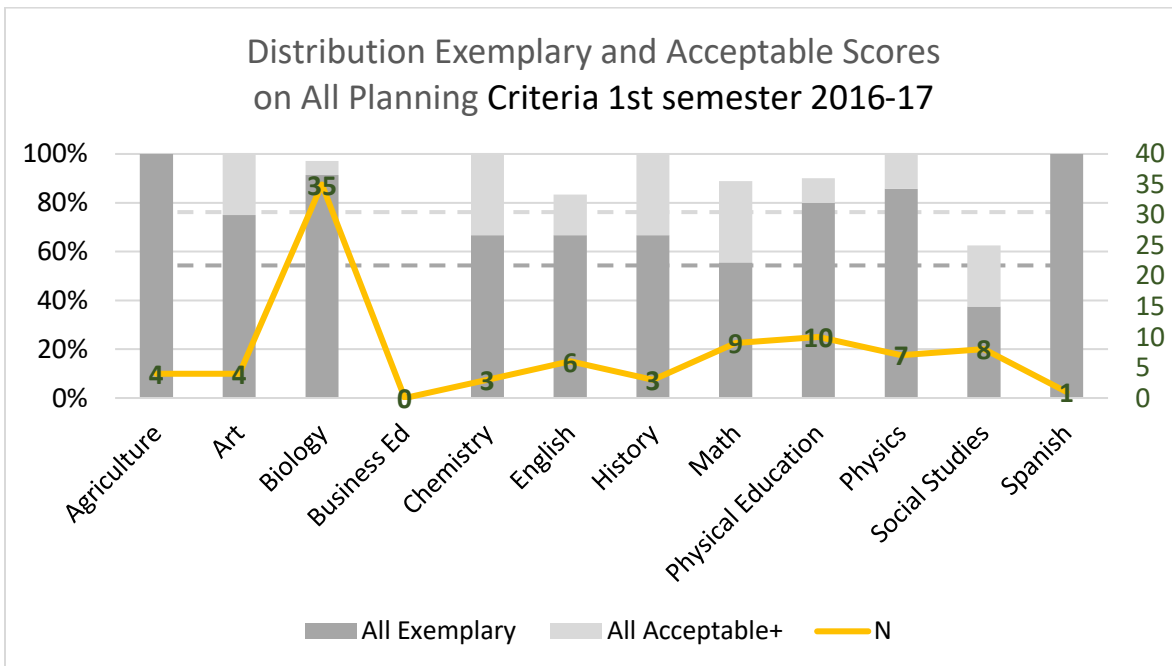


During the second semester of 2015-16, 91 students completed the EDPE 3129 course. Of these, 53 (58% - - -) were rated exemplary on all Blog Assignment Planning criteria. Another 10 were rated acceptable or better on these criteria. In total, 69% (- - -) rated exemplary or acceptable on all planning criteria. The next chart shows the distribution of all acceptable or better ratings with respect to the eight planning criteria across the *expected teaching areas* for the second semester of 2015-16.

EDPE 3129 Blog Assignment
 Planning Performance Summary and Charts



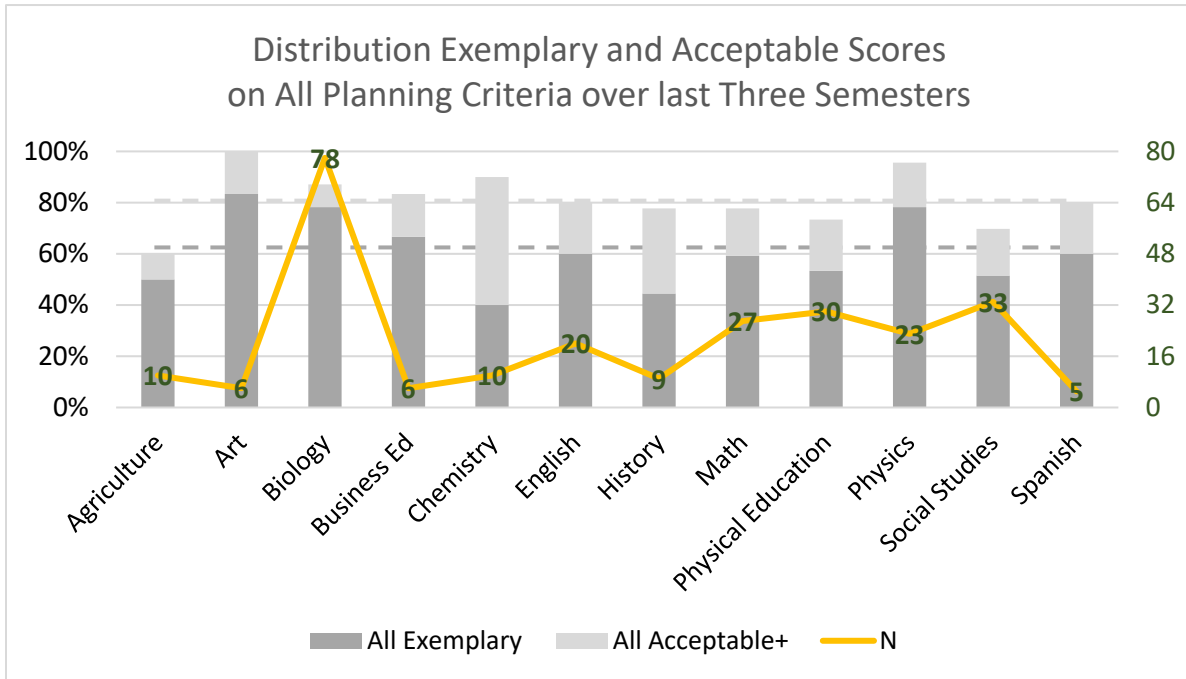
During first semester 2016-17, 91 students completed the EDPE 3129 course. Of these, 70 were rated exemplary on all Blog Assignment Planning criteria. Another 13 were rated acceptable or better on all planning criteria. The next chart shows the distribution of the 83 (91%) that were rated acceptable or better on all planning criteria across the *expected teaching areas*.



In total, 258 students completed the EDPE 3129 course over the past three semesters. Of these, 165 (64%) were rated exemplary on all Blog Assignment criteria. Another 44 were rated acceptable or better on all criteria. The next chart shows the distribution of the 209

EDPE 3129 Blog Assignment
 Planning Performance Summary and Charts

(81%) that were rated acceptable or better on all criteria across the *expected teaching areas* over the past three semesters.



The three semesters of data suggest that the eight criteria on the Blog Assignment aligned with the InTASC Planning Standard are more of a challenge for potential Agriculture, Social Studies, and Physical Education teachers than for those from other areas.

Even though only 57 (22%) of the total 258 students were officially enrolled in an education program or sequence when taking the course, more than half the potential Agriculture and Physical Education teachers are enrolled in education programs. Further investigation is needed to determine if the challenge for these areas arises from the technology, from inadequate education course background, mismatch of expected lesson styles with course requirements or other aspects.